

# PUBLIC INVOLVEMENT PROGRAM PLAN

## **Mad River Wind Farm Project Jefferson and Oswego Counties, New York Case 16-F-0713**

Prepared for:

Atlantic Wind, LLC  
7560 North State Street, Suite 1  
Lowville, NY 13367  
Contact: Jenny L. Briot  
Local calls: (315) 399-0486  
Toll Free: 1-844-308-4616  
[MadRiverWind@avangrid.com](mailto:MadRiverWind@avangrid.com)

Prepared by:

James A. Muscato II, Esq.  
Laura K. Bomyea, Esq.  
Young / Sommer LLC  
5 Palisades Drive  
Albany, NY 12205

(518) 438-9907

December 16, 2016 REVISED February 17, 2017

## Table of Contents

TERM IDENTIFIERS.....	4
1.0 INTRODUCTION.....	6
2.0 PROJECT DESCRIPTION .....	6
2.1 COMPANY PROFILE .....	6
2.2 PROJECT SUMMARY.....	7
2.3 STUDY AREA .....	8
3.0 IDENTIFICATION OF STAKEHOLDERS .....	9
3.1 AFFECTED STATE AND FEDERAL AGENCIES.....	10
3.2 LOCAL AGENCIES.....	10
3.3 MUNICIPALITIES AND SCHOOL DISTRICTS IN PROJECT AREA .....	11
3.4 MUNICIPALITIES AND SCHOOL DISTRICTS IN STUDY AREA.....	11
3.5 ADDITIONAL STAKEHOLDERS .....	12
3.6 HOST AND ADJACENT LANDOWNERS.....	12
3.7 PUBLIC INTEREST GROUPS.....	12
3.8 ENVIRONMENTAL JUSTICE COMMUNITIES.....	12
4.0 LANGUAGE ACCESS.....	13
5.0 PROPOSED PUBLIC INVOLVEMENT PROGRAM .....	14
5.1 CONSULTATION WITH THE AFFECTED AGENCIES AND STAKEHOLDERS.....	16
5.2 PRE-APPLICATION ACTIVITIES TO ENCOURAGE STAKEHOLDER PARTICIPATION.....	17
5.3 ACTIVITIES TO EDUCATE THE PUBLIC ON THE PROPOSAL, PROCESS, AND FUNDING .....	19
5.3.1 Public Meetings .....	19
5.3.2 Educational Materials.....	19
5.4 WEBSITE .....	20
5.5 NOTIFICATIONS.....	21
5.6 ACTIVITIES TO ENCOURAGE PARTICIPATION IN THE CERTIFICATION PROCESS .....	21
6.0 REQUIRED AIRPORT/HELIPORT PRE-APPLICATION CONSULTATION.....	22

## **LIST OF TABLES**

Table 1. Most Prevalent Non-English Languages Spoken in Study Area Zip Codes.....13

## **LIST OF FIGURES**

Figure 1. Project Area

Figure 2. Study Area

Figure 3. Regional View

## **LIST OF EXHIBITS**

Exhibit A. Master List of Stakeholders/Notification List

Exhibit B. Goals and Objectives for Stakeholder Involvement

Exhibit C. Example PIP Tracking Log

## **TERM IDENTIFIERS**

AR – Avangrid Renewables, LLC

Article 10 – NY Public Service Law Article 10 pertains to the certification of major electric generating facilities over 25 megawatts in size. The wind generating portion of the Mad River Facility will be subject to the Article 10 certification process, and is the subject of this PIP.

Article VII – NY Public Service Law Article VII pertains to the certification of major electric transmission facilities over 10 miles. An Article VII component of the Mad River Facility will have its own Project and Study Areas which show the location and vicinity around the proposed transmission corridor, and which would be examined through a separate certification process from the Article 10 certification process for the generation components. Article VII has its own public outreach and engagement requirements, which will be developed in the future.

Atlantic Wind or Applicant – Atlantic Wind LLC

DEC – New York State Department of Environmental Conservation

DPS – New York State Department of Public Service

Facility or Mad River Facility – the Mad River Facility will include both the Article 10 wind generation Project Area and the Article VII electric transmission Project Area. The Article 10 project area component will generate energy from wind, while the Article VII project area component will transmit the power to the electric grid and would interconnect with the existing transmission system.

MRWFP – Mad River Wind Farm Project

PIP – Public Involvement Program plan

Project Area – for purposes of this PIP, “Project Area” or “Article 10 Project Area” refers to all Article 10 generating facility components, interconnections and related facilities

PSL – New York State Public Service Law

PSS – Preliminary Scoping Statement

Siting Board – New York State Board on Electric Generation Siting and the Environment

Stakeholders – as defined by 16 NYCRR 1000.2(an), are those persons who may be affected or concerned by any issues within the Board’s jurisdiction relating to the proposed major electric generating facility and any decision being made by it

Study Area - as defined by 16 NYCRR 1000.2(ar), is a radius of at least 5 miles around all Article 10 generating facility components, interconnections and related facilities (the 5 mile radius around the Project Area)

WTGs – Wind Turbine Generators

## **1.0 INTRODUCTION**

Atlantic Wind LLC (“the Applicant”), a wholly-owned subsidiary of Avangrid Renewables, LLC (“AR”), is proposing to submit an Application to construct and operate a major electric generating facility under Article 10 of the Public Service Law (“PSL”). Pursuant to the rules of the New York State Board on Electric Generation Siting and the Environment (“Siting Board”), applicants proposing to submit an application to construct a major electric generating facility under Article 10 must submit a Public Involvement Program plan (“PIP” or “Plan”). Under 16 NYCRR § 1000.4, the PIP must be submitted to the Department of Public Service (“DPS”) for review at least 150 days prior to filing a Preliminary Scoping Statement (“PSS”).

This document is intended to be the PIP for the Mad River Wind Farm Project (“MRWFP” or “the Project”). The Project is intended to be an up to 350 megawatt (MW) wind powered electric generating facility proposed by the Applicant to be located in the Town of Worth, Jefferson County, and the Town of Redfield, Oswego County, New York (**Figure 1**). The proposed electrical interconnection location would be along the Volney – Marcy 345 kV transmission line, though the exact location is still under development and will be updated as project details are refined. At this time, it is likely that interconnection line will require separate review and approval under Article VII of the Public Service Law. As required under 16 NYCRR § 1000.4, the Applicant’s PIP plan includes the following components:

- (1) consultation with the affected agencies and other stakeholders;
- (2) pre-application activities to encourage stakeholders to participate at the earliest opportunity;
- (3) activities designed to educate the public as to the specific proposal and the Article 10 review process, including the availability of funding for municipal and local parties;
- (4) the establishment of a website to disseminate information to the public and updates regarding the Project and the Article 10 process;
- (5) notifications to affected agencies and other stakeholders; and
- (6) activities designed to encourage participation by stakeholders in the certification and compliance process.

## **2.0 PROJECT DESCRIPTION**

### **2.1 COMPANY PROFILE**

The Applicant, Atlantic Wind LLC, is a wholly-owned subsidiary of Avangrid Renewables LLC (“AR”). AR is one of the largest producers of wind energy in the USA. AR is headquartered in Portland, Oregon, and has more than \$10 billion of operating assets totaling more than 6,000 megawatt (“MW”) of owned and controlled wind and solar generation in the United States. AR has developed over 50 wind farms in the United States alone including two in New York State: Maple Ridge and Hardscrabble. Maple Ridge produces enough electricity to power up to 160,000 average New York State homes. Hardscrabble features 37 American-made Gamesa wind turbines which produce enough electricity to power over 25,000 typical New York State homes each year.

Atlantic Wind proposes to construct and operate the MRWFP, and is in the process of acquiring land rights and seeking appropriate permits to do so.

## 2.2 PROJECT SUMMARY

The Mad River Wind Farm Project is a proposed project up to 350 MW in size, to be located within the Town of Worth, Jefferson County, and the Town of Redfield, Oswego County, New York. The proposed transmission interconnect would be along the Volney – Marcy 345 kV transmission line, though AR is still exploring options for its precise location. The proposed Project Area is depicted in **Figure 1**, and covers approximately 29.89 square miles. The Study Area also includes the Towns of Osceola, Montague, Pinckney and Harrisburg in Lewis County; the Towns of Rodman and Lorraine in Jefferson County; and the Towns of Boylston and Orwell in Oswego County. The proposed Study Area is depicted in **Figure 2**, and covers approximately 261.017 square miles, extending 5 miles in all directions from the Project Area’s boundary.

The Project will be located on leased private land that is rural in nature. The actual footprint of the proposed facilities will be located within the leased land, and will enable landowners to continue existing land uses, such as forest management operations. The proposed Project consists of the construction and operation of a commercial-scale wind power project, including the installation and operation of wind turbines, together with the associated collection lines (below grade and overhead), access roads, permanent meteorological towers, and operation and maintenance (O&M) building. To deliver electricity to the New York State power grid, the Applicant is assessing interconnection options and currently has a queue position for interconnection along the Volney – Marcy 345 kV line. At this time, it is likely that interconnection line will require separate review and approval under Article VII of the Public Service Law. Temporary meteorological towers have been or will be erected in the Towns of Redfield and Worth using existing local permitting processes, prior to Certification, in order to gather wind speed data and other necessary information for the Article 10 Application. The Mad River Wind Farm Project is expected to produce enough electricity to meet the average annual consumption of approximately 60,000 households, based on an average annual electricity consumption for a New York State residential utility customer of 10.932 megawatt hours (MWh).<sup>1</sup>

New York State lands, including Forest Preserve lands, are located within the Study Area, but not within the Project Area, as indicated on **Figures 1 and 2**. Atlantic Wind will consult with DEC as the appropriate land managing agency for the identified State lands, parks, and Management Units in the Study Area. Atlantic Wind will also review the Tug Hill North Unit Management Plan, Upper Salmon River Unit Management Plan, and the Winona Forest Unit Management Plan to determine potential additional outreach to relevant groups involved with these resources. The DEC also holds conservation easements over certain lands within the Study Area, as do the U.S. Natural Resources Conservation Service and the Tug Hill Tomorrow Land Trust. Applicant will consult with these entities regarding these easements. Figures 1 and 2 have been updated to show the location and ownership of these easements.

---

<sup>1</sup> Energy Information Administration (EIA) *Frequently Asked Questions: How Much Electricity Does an American Home Use?* Available at: <http://www.eia.gov/tools/faqs/faq.cfm?id=97&t=3> (last updated October 21, 2015; Accessed April 18, 2016).

The proposed Project will have positive impacts on socioeconomics in the area through employment opportunities, specifically by generating temporary construction employment, the majority of which will likely be drawn from the Jefferson, Oswego, Lewis and Onondaga County labor markets. Local construction employment will primarily benefit those in the construction trades, including equipment operators, truck drivers, laborers, electricians, carpenters and ironworkers, and would create approximately 350 or more temporary positions over 12 to 18 months of construction. In addition, the Project operation will generate up to approximately 20 permanent full-time jobs, including a Plant Manager, Wind Technicians, and Project Administrator. The Project will also result in up to \$2 million in increased annual revenues to the tax bases of local Counties, Schools and municipalities. Further, Project construction and operation activities will yield additional, indirect economic benefits for the community, such as increased revenues for the hospitality industry and local commercial enterprises, through the purchase of local supplies and goods, use of local hotels and amenities, and patronage of local restaurants and eateries by the Project's temporary and permanent labor force. Construction activity and investment is expected to result in approximately \$9 million in local expenditures on goods and services during development and construction phases. Over the anticipated life of the Project, this would yield more than \$60 million in direct payments to municipalities and significant additional indirect socioeconomic benefits to the local economy.

## **2.3 STUDY AREA**

In 16 NYCRR § 1000.2(ar), the Study Area to be used for analysis of major electric generating facilities is defined as “an area generally related to the nature of the technology and the setting of the proposed site. For large facilities or wind power facilities with components spread across a rural landscape, the Study Area shall generally include the area within a radius of at least five miles from all generating facility components, interconnections and related facilities,” as well as alternative turbine location sites within the Project area. The proposed Study Area for the Project is depicted on **Figure 2**.

The PSS and the Application will further define the Study Area and will discuss Project alternatives. For purposes of the PIP, the Project Area has been defined broadly to include proposed land for the generation components included in the Project. As the Article 10 process develops, specific Project component locations will be identified, in compliance with the siting criteria referenced herein, and discussed with the public, stakeholders and the affected agencies through the PIP plan provided herein. It is presumed that any potential alternative component locations would be located within the municipalities identified herein.

With respect to initially identifying the Project Area, it should be noted that the selection of appropriate sites for a wind-powered electric generation facility is constrained by numerous factors that are essential considerations for a given project to operate in a technically and economically viable manner. Availability/quality of wind resource and proximity to the bulk power transmission system are the initial screening criteria evaluated in the site selection process for any wind power project. The Applicant's initial evaluation was based on publicly available data, such as the *Wind Resource of New York, Mean Annual Wind Speed at 100 Meters* map prepared by AWS Truewind, along with site visits and capacity analysis for nearby transmission lines. Initial review of this wind resource map indicated the potential for a suitable wind resource in Jefferson and Oswego Counties, and proximity to the bulk power transmission system. Other important factors that increased the potential to develop a wind power



project in the Project Area include willing land lease participants and host communities, and preliminary environmental assessments that have not indicated any significant wildlife or unique natural habitat concerns.

### **3.0 IDENTIFICATION OF STAKEHOLDERS**

The fundamental first step in designing a Public Involvement Program is determining who may be affected by the proposed Project. The Applicant identified affected agencies and municipalities, utilities, host landowners, and other actual stakeholders based on utilizing DPS guidance; prior submissions of other Article 10 PIP plans; review of County GIS records, tax records, and personal visits; consultation with DPS general counsel and special environmental/regulatory counsel; and conducting internet research. Additionally, the Applicant considered the following in compiling its list of actual affected agencies and other actual stakeholders:

- The proposed locations of Project components within the Project Area;
- Study Area;
- Sign-in sheets from previously held public meetings and outreach efforts;
- “Local Party,” as defined under 16 NYCRR §1000.2(s);
- “Affected Agencies,” as that term is used in 16 NYCRR § 1000 et seq;
- Public interest groups;
- Host landowner(s) who have a land agreement with Atlantic Wind LLC;
- Adjacent landowners with property abutting parcels, or within 500 feet of parcels, where Project components (e.g., wind turbines, collection lines, substation, met tower, O&M facility, etc.) are proposed, and any additional landowners within 2,500 feet of a turbine; and
- State and federal elected officials representing the Host and Adjacent Municipalities.

A master list of stakeholders, which includes all known, potentially interested parties, was developed based upon the combination of efforts described above (see **Exhibit A**). Sections 3.1 through 3.8 below, identify stakeholders by category. The Applicant anticipates that the List of Stakeholders and PIP plan will be updated as necessary based on information received during PIP activities and these updates will be provided to DPS along with the PIP tracking submissions.

The Applicant will continuously work to identify stakeholders throughout the Article 10 process by: updating its stakeholder list as listed above, periodically reviewing the affected agency list to ensure its accuracy, updating the stakeholder list as property owners are identified, and by encouraging stakeholder involvement as outlined in this plan. The stakeholder list will be developed based on the agencies, municipalities and groups listed below, as well as stakeholders who come forward during public meetings and through the Project website. The Applicant anticipates that the stakeholder list will be updated as necessary based on information received during PIP activities and these updates will be provided with the PIP tracking submissions.

### **3.1 AFFECTED STATE AND FEDERAL AGENCIES**

NYS Department of Agriculture and Markets  
NYS Attorney General  
New York State Energy Research and Development Authority (NYSERDA)  
NYS Department of Environmental Conservation, including Regions 6 and 7  
NYS Governor's Office  
NYS Department of Health, including the Regional Environmental Health office in Watertown, NY  
NYS Division of Homeland Security and Emergency Services  
NYS Office of Parks, Recreation and Historic Preservation  
NYS Department of Public Service  
NYS Department of State  
NYS Department of Transportation, including NYSDOT Region 3  
New York Independent System Operator  
Empire State Development Corporation  
State Senator Patty Richie, 48th Senate District (Redfield, Worth)  
State Senator Joseph Griffo, 47th Senate District  
State Assemblyman William A. Barclay, Assembly District 120 (Redfield)  
State Assemblyman Ken Blankenbush, Assembly District 117 (Worth)  
US Senator Charles E. Schumer  
US Senator Kirsten E. Gillibrand  
US Representative Elise Stefanik, District 21 (Worth)  
US Representative Claudia Tenney, District 22 (Redfield)  
US Army Corps of Engineers  
US Fish and Wildlife Service  
US Federal Aviation Administration  
US Department of Defense  
National Telecommunications and Information Administration  
National Park Service Wild, Scenic and Recreational Rivers Program  
US Department of Agriculture, Natural Resources Conservation Service

### **3.2 LOCAL AGENCIES**

NYS Tug Hill Commission  
Cornell Cooperative Extension  
Development Authority of the North Country  
Redfield Volunteer Fire Company  
Lorraine Volunteer Fire Company

### **3.3 MUNICIPALITIES AND SCHOOL DISTRICTS IN PROJECT AREA**

Jefferson County and potentially impacted departments and agencies, including, but not limited to:

- Jefferson County Department of Planning and Economic Development
- Jefferson County Highway Department
- Jefferson County Soil and Water Conservation District
- Jefferson County Fire and Emergency Management Office

Oswego County and potentially impacted departments and agencies, including, but not limited to:

- Oswego County Department of Planning and Community Development
- Oswego County Highway Department
- Oswego County Soil and Water Conservation District
- Oswego County Emergency Management Office
- Oswego County Fire Coordinator
- Oswego County Youth Bureau, Parks and Recreation Division
- Oswego County Promotion and Tourism Department
- Oswego County Department of Health

Town of Worth, and its potentially impacted town departments and agencies, including, but not limited to:

- Highway Department

Town of Redfield, and its potentially impacted town departments and agencies, including, but not limited to:

- Highway Department

Sandy Creek Central School District

South Jefferson Central School District

### **3.4 MUNICIPALITIES AND SCHOOL DISTRICTS IN STUDY AREA**

Lewis County

Oneida County

Town of Osceola, Lewis County

Town of Montague, Lewis County

Town of Pinckney, Lewis County

Town of Harrisburg, Lewis County

Town of Rodman, Jefferson County

Town of Lorraine, Jefferson County

Town of Boylston, Oswego County

Town of Orwell, Oswego County

Altmar Parish Williamstown School District

Copenhagen School District

Lowville School District

South Lewis School District  
Camden School District

### **3.5 ADDITIONAL STAKEHOLDERS**

Oswego County Airport  
Watertown International Airport  
Griffis Airpark Inc.  
Richland Airport  
Tug Hill Farm Airport  
Guilfoyle Ambulance Services  
National Grid  
AT&T  
Verizon  
New York Power Authority (NYPA)

### **3.6 HOST AND ADJACENT LANDOWNERS**

Host landowners are landowners with whom the Applicant has entered into a lease agreement. Adjacent landowners are landowners with property abutting parcels, or within 500 feet of parcels, where Project components (e.g., collection lines, substation, met tower, O&M facility, etc.) are proposed, and any additional landowners within 2,500 feet of a turbine. The identities of potential host and adjacent landowners are determined from County GIS records, tax records, and personal visits by representatives of the Applicant. The final layout will be determined by incorporating further input from stakeholders, as well as processing data from fieldwork (e.g., avoidance of impacts to wetlands identified during field delineation efforts). Therefore, specific host and adjacent Landowner information is not included with this PIP. This information will be submitted with the PSS, as required by 16 NYCRR § 1000.5, and an updated stakeholder list will be provided in the PSS.

### **3.7 PUBLIC INTEREST GROUPS**

Nature Conservancy  
Northern New York Audubon Society  
NY Public Interest Research Group  
Winona Forest Recreation Association  
Tug Hill Tomorrow Land Trust

### **3.8 ENVIRONMENTAL JUSTICE COMMUNITIES**

The Mad River Wind Farm Project will be subject to the rules contained in 6 NYCRR Part 487 promulgated by the NYSDEC for the analysis of environmental justice issues associated with projects subject to review and approval under Article 10 of the New York Public Service Law. Per NYSDEC Environmental Justice Policy CP-29, Potential Environmental Justice (EJ) Areas include census block groups featuring populations that meet or exceed at least one of the following statistical thresholds:

1. At least 51.1% of the population in an urban area reported themselves to be members of minority groups; or
2. At least 33.8% of the population in a rural area reported themselves to be members of minority groups; or
3. At least 23.59% of the population in an urban or rural area had household incomes below the federal poverty level

Based on data obtained from the NYSDEC’s Geospatial Information System (GIS) Tools for Environmental Justice ([www.dec.ny.gov/public/911.html](http://www.dec.ny.gov/public/911.html)), Atlantic Wind has determined that there are no Potential EJ Areas near the Project Area or within the Study Area. The closest Potential EJ Areas in Jefferson and Lewis Counties are located in the Village of Lowville, portions of the Town of Martinsburg and the City of Watertown, which are located outside the Study Area and are 15-20 miles from the Project Area. The closest Potential EJ Areas in Oswego County are located in Fulton and Oswego, which are each over 30 miles from the Project Area.

#### **4.0 LANGUAGE ACCESS**

In 16 NYCRR § 1000.4(d), Article 10 regulations require the PIP to identify (1) any language other than English spoken according to United States Census data by 5,000 or more persons residing in any 5-digit zip code postal zone in which any portion of such zone is located within the Study Area for the facility; and (2) any language other than English spoken by a significant population of persons residing in close proximity to the proposed facility, alternative locations, or interconnections.

The Study Area for the Project includes portions of Lewis, Jefferson and Oswego Counties; Lewis County is a host municipality, while Jefferson and Oswego Counties are adjacent municipalities. According to the 2010-2014 American Community Survey 5-year Estimates, 2.7% of Lewis County residents age 5 or older speak a language other than English at home. With a 2014 population estimate of 25,487 persons in Lewis County, this means approximately 688 people in the County speak a language other than English at home. In Jefferson County, 7.7% of residents age 5 or older (approximately 8,367 persons) speak a language other than English at home. In Oswego County, 4% of the 114,852 residents age 5 or older (approximately 4,594 persons) speak a language other than English at home.

The Study Area contains portions of eight (8) 5-digit zip codes. Table 1 summarizes the most prevalent non-English languages spoken in each of these zip codes.

**Table 1. Most Prevalent Non-English Languages Spoken in Study Area Zip Codes**

Zip Code	Language	Number of Speakers
13605	Spanish or Spanish Creole	111
13367	Spanish or Spanish Creole	133
13144	Other Indo-European Languages	99
13302	Spanish or Spanish Creole	18
13626	Spanish or Spanish Creole	18

13659	Other Indo-European Languages	19
13682	Spanish or Spanish Creole	18
13316	Spanish or Spanish Creole	62
13083	Asian and Pacific Island Languages	6
13493	Spanish or Spanish Creole	23
13437	Other Indo-European Languages	8

As shown above in Table 1, no language other than English is spoken by more than 5,000 people residing in any zip code within the Study Area. (Source: Factfinder.Census.gov, 2010-2014 American Community Survey 5-Year Estimates).

## 5.0 PROPOSED PUBLIC INVOLVEMENT PROGRAM

According to 16 NYCRR § 1000.4(c), a Public Involvement Program must include: (1) consultation with the affected agencies and other stakeholders; (2) pre-application activities to encourage stakeholders to participate at the earliest opportunity; (3) activities designed to educate the public as to the specific proposal and the Article 10 review process, including the availability of funding for municipal and local parties; (4) the establishment of a website to disseminate information to the public; (5) notifications; and (6) activities designed to encourage participation by stakeholders in the certification and compliance process. It is anticipated that this will be an ongoing, evolving process throughout all phases of the Article 10 review process (pre-application phase, application phase, hearing and decision phase, and post-certification phase) intended to disseminate information regarding the Project to stakeholders, solicit information from those stakeholders during public outreach events and generally foster participation in the Article 10 review.

The Applicant has recently established a user friendly website in plain English that describes the Project (<http://www.avangridrenewables.us/madriver>). While still under development, this website eventually will describe the Article 10 process and provide Project updates throughout the development and construction phases of the Project to keep the community informed of the Project’s status (see Section 5.4 below for additional detail).

The following PIP elements will carry on through the duration of the Project:

- Project Representative and contact information (for the public and stakeholders to contact with questions, concerns, etc.):

Mad River Wind Farm Project  
c/o Jenny Briot  
7560 North State Street, Suite 1  
Lowville, NY 13367  
Office Number: 315-874-4231

Toll Free Number: 1-844-308-4616

[MadRiverWind@avangrid.com](mailto:MadRiverWind@avangrid.com)

The Lowville Office will be open Tuesdays and Thursdays from 10 a.m. to 2 p.m., and by appointment.

- Local Project Office:  
5010 County Route 17  
Redfield, NY 13437  
Office Hours TBD. When established, these hours will be posted to the Project Website. In addition, Applicant will do a direct mailing to residents in the Project Area to announce the Local Project Office opening and hours, once established.

These contact numbers will be available for interested persons to leave their Project comments in Voicemail messages which will be routinely monitored by the Applicant and logged in the PIP Tracking Logs. PIP Tracking Logs will be filed in the Siting Board docket on a bi-monthly basis.

Interested individuals are encouraged to attend local information sessions and open houses to address any questions they may have for Project staff. Members of the public seeking documents or information are asked to submit those requests in writing, by regular mail or electronic mail, to ensure their inquiries are answered in a timely manner—generally within 5 to 7 business days, wherever possible. If additional time is needed to respond to a question or request for information, Atlantic Wind will provide the requesting individual with an acknowledgement that his or her request has been received, that the company is working to provide a response, and an estimate of how much time it will take to provide a response, if possible. If the information requested is not yet available—such as the results of ongoing studies or information not anticipated to be available until closer to the Application stage—then the requesting individual will be provided with information about when and where the requested information will be available in the future.

Applicant recognizes that the public comment period following the filing of the Preliminary Scoping Statement (PSS) is 21 days. Therefore, during the PSS comment period in particular, Applicant will make every reasonable effort to respond to informal inquiries and document requests in a timely manner, so that stakeholders are able to submit comments within the 21-day PSS comment period. Where requests involve straightforward questions, or seek documents which are available, and/or information which can be easily ascertained, Applicant will provide some type of response to PSS-related inquiries within 2-3 business days, or sooner wherever possible. However, to the extent that requests involve information which is not yet available—such as results of studies, impact analysis, or documents which have not yet been produced—Applicant will so indicate in response to the request, and will identify at what later stage in the process the requested information will likely be available. The pre-application process is iterative in nature, and there will be information which, at early stages, simply will not be available. Wherever possible, Applicant will attempt to estimate when such information would be available.

- Local Document Repositories:

Worth Town Hall  
24609 County Route 189  
Rodman, NY 13682

Redfield Town Hall  
4830 County Route 17  
Redfield, NY 13437

Local document repositories will be updated with additional pertinent information as it becomes available, including a copy of this final PIP Plan.

## **5.1 CONSULTATION WITH THE AFFECTED AGENCIES AND STAKEHOLDERS**

Article 10 regulations require both general and specific consultations with affected agencies and municipalities. Affected agencies, listed above in Section 3.1 and 3.2, were identified through review of the Article 10 regulations in consultation with the Project’s permitting counsel and environmental consultant. Affected municipalities are identified in Sections 3.3 and 3.4 above. Consultation with affected agencies and municipalities will include the following general steps:

1. The Applicant will make an initial contact with each agency or municipality to make certain they are aware of the Project and inform them of the Article 10 process, including steps for intervenor funding and provide information on who to contact with any questions or comments about the Project or about Article 10;
2. Subsequent interaction with the agency or municipality as needed to answer specific questions or concerns about the Project, and to identify the applicable studies and impact analyses to be performed and how they pertain to the Project; and
3. Other specific consultations as required by the Article 10 regulations.

The goals of the initial consultation with each municipality or agency will be to consult with representatives, disseminate and request information, and schedule follow up meetings and/or consultations, as appropriate. Specific information provided to the affected agencies and municipalities will include description of the Project and location; explanation the phases of the Article 10 process and how the agency or municipality can participate in each step; description of the available intervenor funding and the process for obtaining funding; information about other planned consultations; sources of additional information about the Project and Article 10 (e.g., the Project and Siting Board websites), and agricultural land and operations impacts. Information to be requested from affected municipalities and agencies may vary by the involvement of each (e.g., whether it is a host or adjacent municipality) but could include topics such as payment in lieu of tax agreements, highway work agreements, local laws, emergency response organizations, environmental impact review, contact information for public interest groups, and determination of which news sources are used for official notices.



It should be noted that, in accordance with 16 NYCRR 1000.5(g), comments on the Preliminary Scoping Statement ("PSS") are due within 21 days after its filing with the Secretary. The Applicant intends to engage municipalities, agencies, and stakeholders throughout the PIP implementation process in order to identify their respective interests, and obtain information regarding particular resources, locations, concerns and recommendations of the affected municipalities, agencies and interests groups. Prior to filing the PSS, this will be accomplished through a variety of methods, including the various open house meetings, direct correspondence, review of any submitted comments on the website, and targeted meetings with some of the individual stakeholder entities identified herein. During these sessions, the Applicant will provide stakeholders with the approximate schedule for PSS submission and highlight the 21-day public comment period.

Consultations will be deemed successful if (1) the appropriate information about the Project and Article 10 process was provided to agency or municipality representatives, (2) the relevant information requested was gathered to help advance the PIP process and preparation of the Application, (3) follow up meetings or consultations were either scheduled or will be scheduled, as needed, and (4) the Applicant has identified all stakeholder interests and issues.

**Exhibit B** lists the affected agencies and municipalities, as identified at the time this PIP was prepared, the goals and objectives of each consultation, and the plan for achieving these goals. Please note that many of these consultations have already been initiated. A PIP Tracking Log outlining those consultations for the Mad River Wind Farm Project prior to the submission of the PIP will be submitted in concert with this document, and Tracking Logs will be regularly submitted thereafter.

## **5.2 PRE-APPLICATION ACTIVITIES TO ENCOURAGE STAKEHOLDER PARTICIPATION**

### **5.2.1 Activities to Date**

Through meetings with various Federal, State and local agencies, the Applicant has been engaging in some pre-application discussions with various stakeholders to provide information regarding early-stage development efforts, such as reaching out to potential landowners and determining potential locations for temporary meteorological test towers ("Met Towers"). Applicant has attended meetings with the Redfield and Worth Town Boards, as well as a Jefferson County Legislator whose district includes the proposed project, for some initial discussion of the Project generally. Public engagement activities Applicant has conducted to date include:

- Meetings with Tug Hull Commission, DPS and DEC
- Initial Contact with Town Supervisors and Town Boards (Worth and Redfield), and Jefferson County Legislator for the Town of Worth
- Attended meetings at Jefferson Community College for, and participated in discussions on, the Fort Drum Joint Land Use Study
- Secured a local office space in nearby Lowville and a project office in Redfield, both of which are open to the public and staffed with company representatives to address questions. Office hours will be posted on Project website.

### 5.2.2 Upcoming Pre-Application Activities

The Applicant continues to communicate with local officials, and will participate in future town board meetings, as the pre-application process proceeds. Applicant will hold public information meetings in the Project Area prior to the submission of the PSS. That session will include an afternoon (approximately 2 p.m. to 4 p.m.) and an evening session (approximately 6 p.m. to 8 p.m.), to accommodate the schedules of working people.

In addition to the stakeholder engagement activities that have already taken place, the Applicant will continue pre-application activities to encourage stakeholder participation as set forth in the Agency/Municipality Consultations included in **Exhibit B** of this PIP. This table will be continuously updated as consultations and stakeholder participation activities take place, and additional means of engagement are identified (as necessary).

### 5.3.3 Projected Timelines and Milestones

At this time, Atlantic Wind contemplates filing a Preliminary Scoping Statement (PSS) in the fall or winter of 2017, and an Application in late 2017 or early 2018—though those targets are subject to change based on progress of studies, stakeholder engagement, and numerous other factors. At least three days before the PSS is filed, Atlantic Wind is required to publish certain legal notices alerting stakeholders to the upcoming filing. As noted in Sections 5.3.1 and 5.5, the Applicant will also utilize more informal opportunities to notify the public of the filing, such as by placing advertisements in local weekly newspapers and websites, and on the Project Website, and by circulating informational postcards to residents in the Project Area.

Once the PSS is filed, intervenor funding will be made available for municipalities and other stakeholders seeking funds to defray the cost of reviewing and providing comments on the PSS. Further, following the PSS filing, there would be a 21-day comment period during which stakeholders and members of the public would have the opportunity comment on the scope and methodology of studies proposed by Atlantic Wind to develop information necessary for an Article 10 Application. Atlantic Wind will then have 21 days to respond to PSS Comments.

Within 60 days of the PSS filing, the presiding examiner assigned to the proceeding will schedule a meeting for interested parties to meet and initiate the stipulations process. Applicants have the ability to pursue stipulations with interested parties, a process which involves discussing and, ideally, coming to agreements amongst the parties about the sufficiency of the planned scope and methodology of studies to be included in the application. The regulations do not set a timeframe for the commencement, duration or completion of Stipulations; those timelines will be dependent on the parties.

Finally, no less than 90 days after the PSS was filed, Atlantic Wind can file its Application. Additional notices to stakeholders are required in the days before the Application is filed. Once an Application is deemed complete, the Siting Board has no more than one year to make a decision whether to certify the facility. During that period, the process may consist of conferences, hearings, additional stipulations discussions, and many other steps involved in the Application review process. Atlantic Wind will continue its efforts to engage the public and stakeholders throughout that process, as described below.

Atlantic Wind intends for this PIP Plan to be flexible and intends to tailor its approach to community needs. The company is in regular contact with local officials, will hold open houses and regular office hours, and will consider whether additional events are appropriate based on interest, attendance and feedback at upcoming public sessions. The evolution of this public engagement strategy will be documented in regular PIP Tracking Logs, and will be summarized and discussed in the Application, at Exhibit 2.

### **5.3 ACTIVITIES TO EDUCATE THE PUBLIC ON THE PROPOSAL, PROCESS, AND FUNDING**

As noted above, Applicant has attended and will continue to attend Town meetings, is planning Applicant-sponsored public information sessions, will be distributing educational materials, and will provide a Project Website, which will offer information on the proposed Project, as well as links to and information on the Article 10 process, intervenor funding, and other important stakeholder issues. These efforts will allow Applicant to engage with all stakeholders regarding the proposed Project and will offer multiple avenues of information distribution, so that stakeholders and the public have multiple, varied opportunities to obtain information on the Project and participate in the proceedings. The specific strategies intended to further these efforts are discussed in further detail below.

#### **5.3.1 Public Meetings**

The Applicant expects to hold open house style public meetings on the proposed project in early 2017, as discussed in Section 5.2, above. There, the Project team will present information on the current proposal and the Article 10 process, answer questions from members of the public, and gain insights into public outreach options for the community. There would be a short introduction from one of the Applicant's representatives, as well as one-on-one discussions with attendees around posters displaying Project information.

Prior to submittal of the PSS, the Applicant anticipates holding an additional session planned for in the Project Area, notice of which would be published in local newspapers and on the Project Website. All public meetings held by the Applicant will be properly noticed in local newspapers, including the *Watertown Daily Times* (and, where appropriate, its *Salmon River News* subsidiary), the *Jefferson County Journal*, the *Rome Sentinel* and the *Queen Central News*, as well as the Project website, [OswegoCountyNewsNow.com](http://OswegoCountyNewsNow.com) and [OswegoCountyToday.com](http://OswegoCountyToday.com), at least 14 days prior to the scheduled event.

#### **5.3.2 Educational Materials**

The Applicant will develop educational materials to inform the public about wind-generated energy, the proposed Project, intervenor funding, phases of construction, permitting and environmental studies, information about sound, and the Article 10 process generally. These materials will include poster-sized maps and graphics to be displayed at public meetings. In addition, more portable materials (e.g., factsheets or brochures) will be distributed at public meetings, and via local libraries, host municipalities, adjacent municipalities, and mailings to stakeholders and additional addresses obtained through public meetings and the Project website, and materials will also be available on the Project website. These materials will allow the public to learn more about the Project, and will include links to the Siting Board and Project websites. Materials will include information on how to submit comments on the Project, as well as the DPS Case Number for the Project proceeding.

A number of downloadable and printable educational materials will be available on the Project Website, at <http://www.avangridrenewables.us/madriver>.

The Applicant also plans to mail informational postcards directly to residents within the Project Area to provide information on upcoming public meetings as well as notice of the filing of, and comment deadlines for, the Preliminary Scoping Statement and Application.

## **5.4 WEBSITE**

The Applicant will establish and continue to develop a user friendly website in plain English that describes the project (<http://www.avangridrenewables.us/madriver>). This website will provide information regarding the Article 10 process, and Project updates and information will be added as it becomes available throughout the development and construction phases of the Project to keep the community informed of the Project's status. For example, additional maps will be added to the website as the Project layout evolves, and notices will be posted the website prior to various milestones and public meetings/outreach events. The Project Website URL will also be listed on educational materials and documents provided to stakeholders, and will be included in the materials available at local document repositories.

As information becomes available, it will be added to the website. Such information would include:

- Project description;
- Project benefits and need;
- Summary of permitting requirements;
- Links to the Siting Board Article 10 Public Information Coordinator, the Siting Board home page, and case-specific documents;
- Information on the Article 10 process;
- Summary of the Intervenor Funding process and how to apply;
- Instructions on how to be added to the Project's Service List or request informational mailings or notifications;
- Project layout figures and photo simulations/renderings;
- Project contact information, including email address and toll free telephone number;
- Copies of Article 10 and related licensing documents;
- Electronic copies of distributed educational materials;
- A schedule that lists dates/times/locations for outreach events and key milestone dates, such as when the Application will be filed;
- Addresses of local document repositories; and
- Tracking Reports summarizing the Project's PIP activities to date, including summaries of stakeholder interactions, comments, and questions.

As indicated above, the website includes Project contact information (email address and local telephone number). The Applicant intends to respond directly to all substantive inquiries and comments submitted to the Project contact, and will document all such correspondence. Email and postal addresses collected through the website will be added to the master stakeholder list.

## 5.5 NOTIFICATIONS

The Article 10 regulations establish certain notification and publication requirements for serving documents and notices of project milestones. Pursuant to § 1000.7, Applicant shall publish all required formal legal notices in the *Rome Sentinel* and *Watertown Daily Times*—the traditional newspapers of largest circulation in the area. Informational notices meant to provide the public with details and updates about upcoming events and major project milestones will be placed in the additional publications and websites listed in Section 5.3.1 of the PIP.

No less than three days before filing of the Preliminary Scoping Statement (PSS) and the Application, the Applicant will publish a legal notice regarding those filings in the *Rome Sentinel* and *Watertown Daily Times*; serve each member of the State Legislature in whose district any portion of the proposed facility is to be located; and provide written notice to those persons who have filed a statement with the secretary within the past twelve months that wish to receive all such notices. In addition, informal notifications indicating that these documents have been filed, and providing comment periods and information on document access, will be posted on the Project website and circulated using the broader informal notification methods described in Section 5.3.1.

The Applicant will publish any other notices required by the Presiding Examiner or other sections of Article 10 in the manner proscribed by the Presiding Examiner or under the procedures contained in Article 10. Notices will also be copied to the stakeholder list, in accordance with Article 10 regulations.

## 5.6 ACTIVITIES TO ENCOURAGE PARTICIPATION IN THE CERTIFICATION PROCESS

Beyond the activities described above in Sections 5.1 through 5.5, the Applicant will identify additional, practical measures to encourage stakeholder participation during the certification process. It is anticipated that this will be an ongoing, evolving process throughout all phases of the Article 10 review process (pre-application phase, application phase, hearing and decision phase, and post-certification phase).

The Applicant will track its Public Involvement Program and provide regular updates to DPS Staff, Specifically, the Applicant will maintain a PIP Tracking Log, filed on a bi-monthly basis, that will provide specifics on all meetings, including dates, locations, attendees, purpose, and follow-up action items, and will include updates and/or advances in the Project. An example PIP Tracking Log is included as **Exhibit C** of this document. The first Mad River PIP Tracking Log will be submitted with the draft PIP.

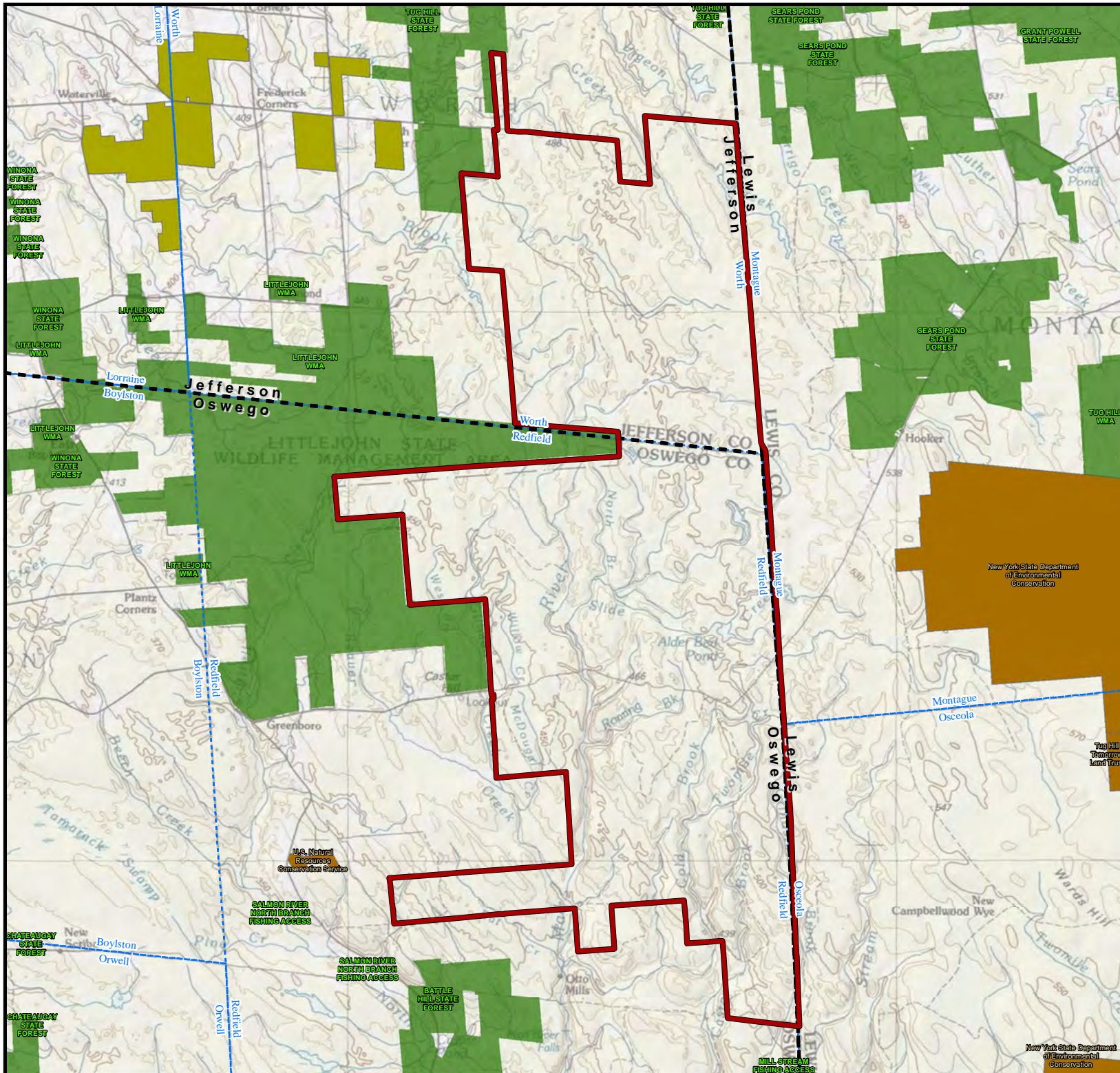
As previously stated, the Applicant intends to hold open house style public meetings prior to submittal of the PSS and Application, as discussed above. In addition, the Project website will be updated continuously with Project developments, meetings, and announcements to keep stakeholders and the public informed.

## **6.0 REQUIRED AIRPORT/HELIPORT PRE-APPLICATION CONSULTATION**






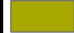

Pursuant to 16 NYCRR § 1001.25(e) & (f), the Applicant shall coordinate with the Federal Aviation Administration, the Department of Defense, and the National Telecommunications and Information Administration to confirm possible affected airports or heliports near the location of the Project, or potential hazards associated with radio signal interference and air traffic control. Each federal entity will be contacted via phone call and/or letter to identify the operators and/or appropriate contact person.

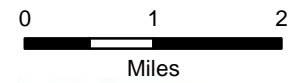
Once the proper operator/representative is determined, the outreach to the operator of the airport or heliport will include another phone call, a follow-up letter, and, if necessary, a meeting to provide Project-specific information. The Project-specific information to be provided will include: a detailed map showing the Study Area, Project Area, and location of Project components; coordinates and dimensions for each proposed turbine; a description of the Project construction and operational phases; and a request for review and comment. In addition, outreach to the Department of Defense will include an initial screening with a follow-up review of the proposed Project, if required.

**Figure 1**  
**Project Area**  
**Mad River Wind Project**

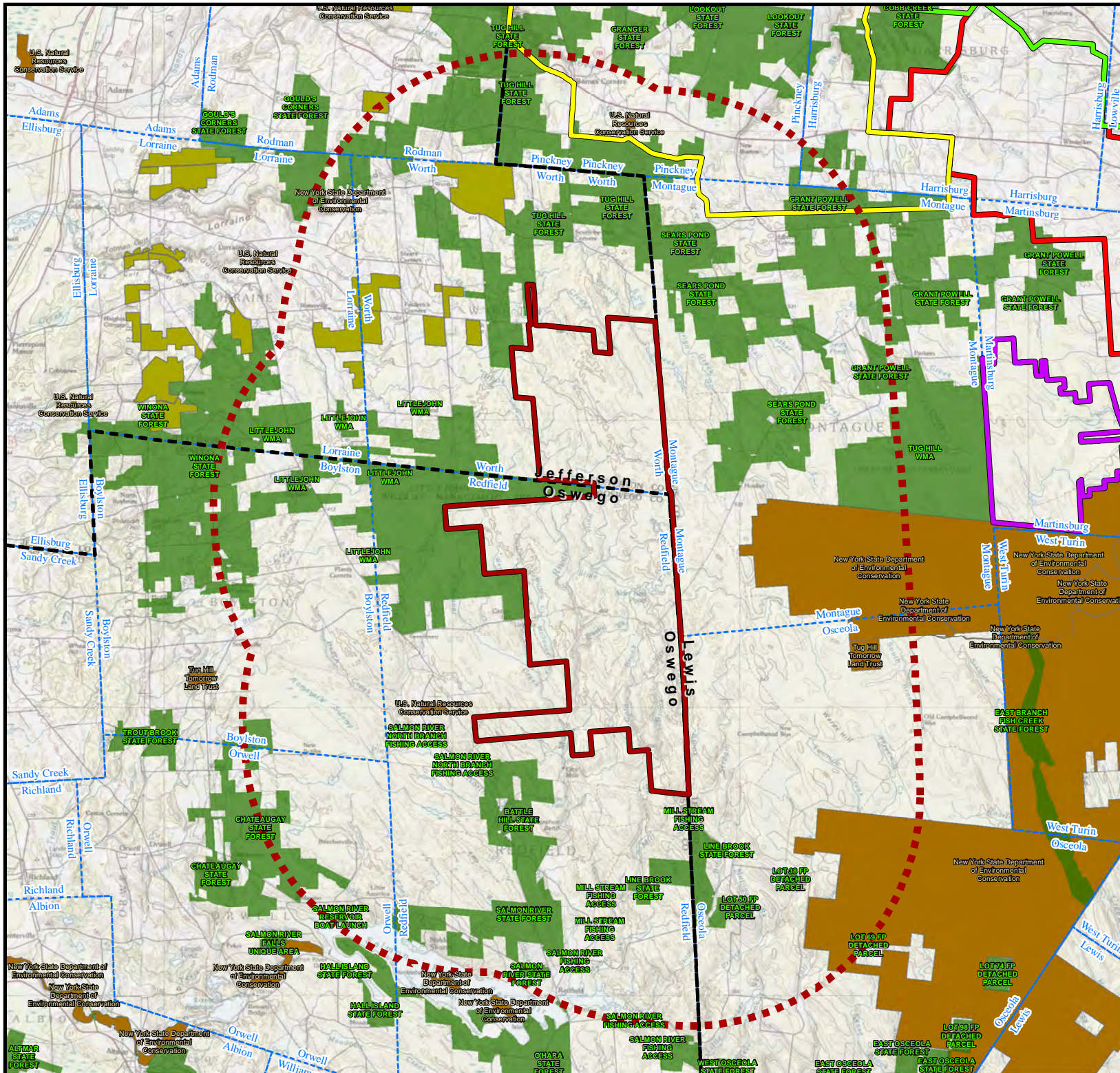


**Legend**

-  Mad River Project Area
-  Deer River Project Area
-  County
-  City/Town
-  State Lands
-  County Forest
-  Conservation Easement

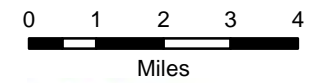


**Figure 2**  
**Study Area**  
**Mad River Wind Project**



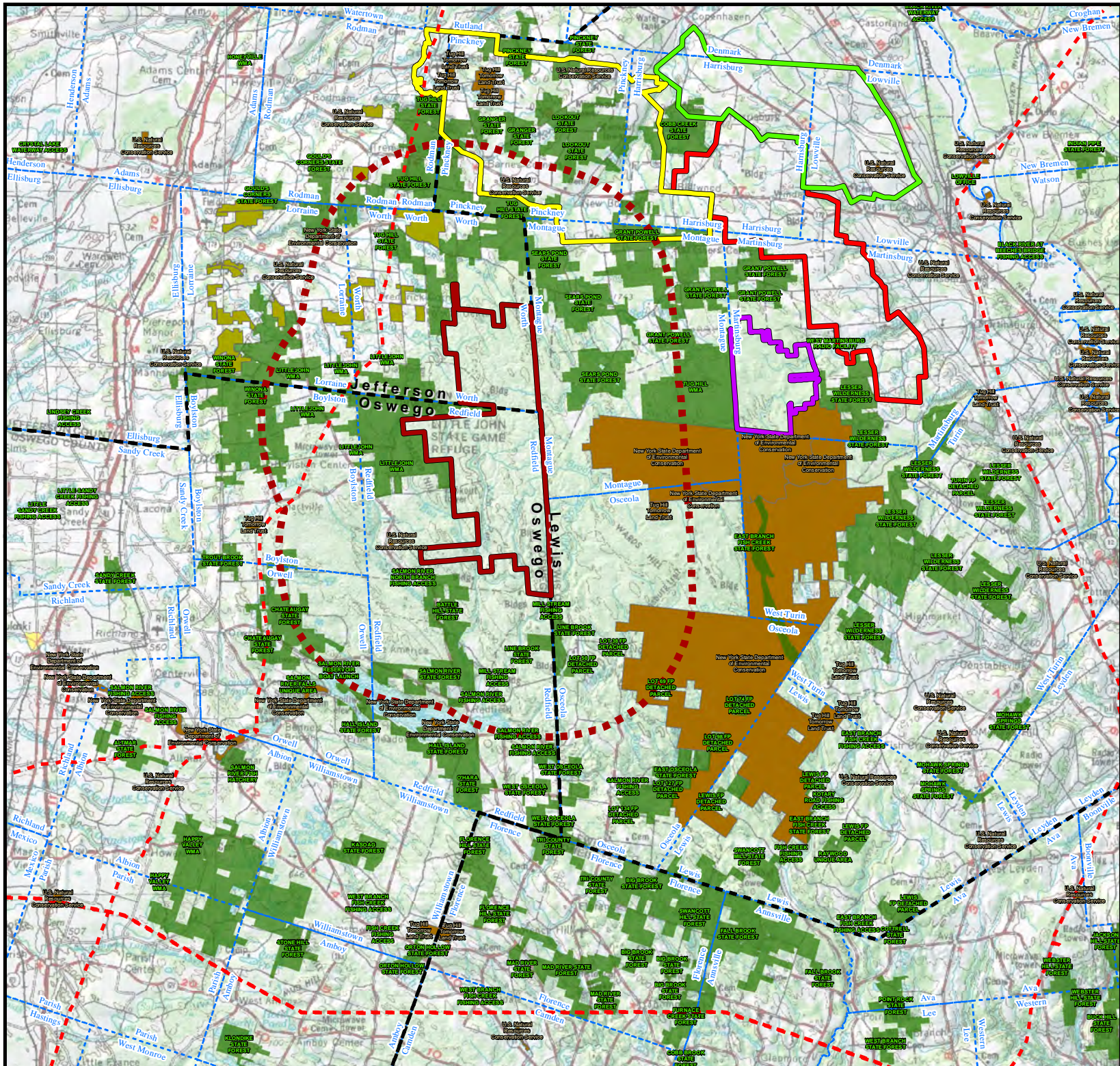
**Legend**

- Mad River Project Area
- 5 Mile Study Area
- Deer River Project Area
- Roaring Brook Project Area
- Maple Ridge Wind Project
- Number Three Wind Project
- County
- City/Town
- State Lands
- County Forest
- Conservation Easement















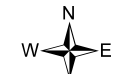


**Figure 3**  
**Regional View**  
**Mad River Wind Project**



**Legend**

-  Mad River Project Area
-  5 Mile Study Area
-  Deer River Project Area
-  Roaring Brook Project Area
-  Maple Ridge Wind Project
-  Number Three Wind Project
-  County
-  City/Town
-  State Lands
-  County Forest
-  Conservation Easement
-  Existing Transmission



## **Exhibit A**

Master List of Stakeholders and Notification List

## **AFFECTED STATE AND FEDERAL AGENCIES**

### **NYS Department of Agriculture and Markets**

Richard Ball, Commissioner  
10B Airline Drive  
Albany, NY 12235

### **NYS Attorney General**

Eric T. Schneiderman  
State Capital Building  
Albany, NY 12224

### **New York State Energy Research and Development Authority (NYSERDA)**

Tom Lynch, Director of Government Affairs  
17 Columbia Circle  
Albany, NY 12203-6399

### **NYS Department of Environmental Conservation**

Basil Seggos, Commissioner  
625 Broadway  
Albany, NY 12233

### **NYS Department of Environmental Conservation**

Region 6 Headquarters  
Judy Drabicki, Regional Director  
317 Washington St.  
Watertown, NY 13601

### **NYS Department of Environmental Conservation**

Region 7 Headquarters  
Matthew Marko, Regional Director  
615 Erie Blvd. West  
Syracuse, NY 13204-2400

### **NYS Governor's Office**

Andrew M. Cuomo  
NYS State Capitol Building  
Albany, NY 12224

### **NYS Department of Health**

Howard Zucker, Commissioner  
One Commerce Plaza  
99 Washington Avenue  
Albany, NY 12231

### **NYS Department of Health**

Sheri Palmer, Acting District Director  
Regional Environmental Health Office  
Dulles State Office Building  
317 Washington Street  
Watertown 13601-3741

**NYS Division of Homeland Security and Emergency Services**

Jerome Hauer, Commissioner  
1220 Washington Avenue  
State Office Campus Building 7A, Suite 710  
Albany, NY 12242

**NYS Office of Parks, Recreation and Historic Preservation**

Ruth Pierpont, Deputy Commissioner  
New York State Division for Historic Preservation  
Peebles Island State Park  
P.O. Box 189  
Waterford, NY 12188-0189

**NYS Department of Public Service**

Kathleen Burgess, Secretary  
Empire State Plaza  
Agency Building 3  
Albany, NY 12223

**NYS Department of State**

Rossana Rosado, Secretary of State  
One Commerce Place  
99 Washington Avenue  
Albany, NY 12231-0001

**NYS Department of Transportation**

Matthew Driscoll, Commissioner  
50 Wolf Road  
Albany, NY 12232

**NYS Department of Transportation, Region 3**

David P. Smith, Director  
State Office Building  
333 E. Washington Street  
Syracuse, NY 13202

**New York Independent System Operator**

Michael Bemis, Board Chair  
10 Krey Boulevard  
Rensselaer, NY 12144

**Empire State Development Corporation**

Steve Hunt, North Country Regional Director  
North Country Region: Watertown Office  
Dulles State Office Building  
Watertown, NY 13601

**State Senator Patty Ritchie, 48th Senate District**

Dulles State Office Building, Room 418  
Watertown, NY 13601

**State Senator Joseph Griffo, 47th Senate District**

District Office  
207 Genesee Street Room 408  
Utica, NY 13501

**State Assemblyman Ken Blankenbush, Assembly District 117**

District Office  
40 Franklin Street, Suite 2  
Carthage, NY 13619

**State Assemblyman William A. Barclay, Assembly District 120**

District Office  
200 North Second Street  
Fulton, NY 13069

**US Senator Charles E. Schumer**

15 Henry Street, Room 100AF  
Binghamton, NY 13901

**US Senator Kirsten E. Gillibrand**

100 State Street, Room 4195  
Rochester, NY 14614

**US Representative Elise Stefanik, District 21**

120 Washington St., Suite 200  
Watertown, NY 13601

**US Representative Claudia Tenney, District 22**

PO Box 128  
28 Robinson Road  
Clinton, NY 13323

**US Army Corps of Engineers**

Steve Metivier, Chief, NY Application Evaluation Section  
Regulatory Branch, Buffalo District Office  
1776 Niagara Street  
Buffalo, NY 14207

**US Fish and Wildlife Service**

David Stilwell, Field Supervisor  
3817 Luker Road  
Cortland, NY 13045

**US Federal Aviation Administration**

Carmine Gallo, Eastern Region Regional Administrator  
1 Aviation Plaza  
Jamaica, NY 11434

**US Department of Defense**

Steven J. Sample  
Mission Evaluation Branch

3400 Defense Pentagon, Room 5C646  
Washington, DC 10301

**National Telecommunications and Information Administration**

Lawrence E. Strickling, Assistant Secretary for Communications and Information  
Herbert C. Hoover Building (HCHB)  
U.S. Department of Commerce  
1401 Constitution Avenue, N.W.  
Washington, DC 20230

**National Park Service**

Rivers, Trails and Conservation Assistance Department  
Wild, Scenic and Recreational Rivers Program  
Dave Lange, Regional Program Manager  
Northeast Region  
1201 Eye Street NW  
Washington, DC 20005

**US Department of Agriculture**

**Natural Resources Conservation Service**

Kent Frary, District Conservationist  
Watertown Service Center, Northeast Area  
PO Box 838  
Watertown, NY 13601-0838

**LOCAL AGENCIES**

**NYS Tug Hill Commission**

Katie Malinowski, Executive Director  
Dulles State Office Building  
317 Washington Street  
Watertown, NY 13601-3782

**Cornell Cooperative Extension**

Paul Forestiere II, Executive Director  
Oswego County  
3288 Main St.  
Mexico, NY 13114

**Cornell Cooperative Extension**

Kevin Jordan, Executive Director  
Jefferson County  
203 North Hamilton Street  
Watertown, NY 13601

**Development Authority of the North Country**

Gary Turck, Chairman  
317 Washington Street  
Watertown, NY 13601

**Lorraine Volunteer Fire Company**

20876 County Route 189  
Lorraine, NY 13659

**Redfield Fire Department**

4879 County Rte 17  
Redfield, NY 13437

**MUNICIPALITIES AND SCHOOL DISTRICTS IN PROJECT AREA**

**Jefferson County**

Gizelle J. Meeks, County Clerk  
Robert F. Hagemann, III, County Administrator  
175 Arsenal Street  
Watertown, NY 13601

**Jefferson County Department of Planning  
and Economic Development**

Michael J. Bourcy, Interim Director  
175 Arsenal Street  
Watertown, New York 13601

**Jefferson County Highway Department**

James Lawrence, Jr., Superintendent  
21897 County Route 190  
Watertown, NY 13601

**Jefferson County Soil and Water Conservation District**

Christin Watkins, Executive Director  
21168 NY-232  
Watertown, NY 13601

**Jefferson County Fire & Emergency Management**

Joseph D. Plummer, Director<sup>1</sup>  
753 Waterman Drive  
Watertown, NY 13601

**Jefferson County Public Health Services**

Ginger B. Hall, Director of Public Health  
531 Meade Street Street  
Watertown, New York 13601

**Oswego County**

Philip R. Church, County Administrator  
Michael C. Backus, County Clerk  
46 East Bridge Street  
Oswego, NY 13126

---

<sup>1</sup> Mr. Plummer also serves as the Program Coordinator for Jefferson County's Multi-Jurisdictional Hazard Mitigation Plan.

**Oswego County Department of Planning & Community Development**  
David Turner, Director  
46 East Bridge Street  
Oswego, NY 13126

**Oswego County Highway Department**  
Kurt Ospelt, Superintendent  
31 Schaad Drive  
Oswego, NY 13126

**Oswego County Soil and Water Conservation District**  
Joe Chairvolotti, District Manager  
3105 State Route 3  
Fulton, NY 13069

**Oswego County Emergency Management Office**  
Dale A. Currier  
200 North Second Street  
Fulton, NY 13069

**Oswego County Hazard Mitigation**  
c/o Oswego County Emergency Management Office  
Terry Bennett, Program Coordinator  
200 North Second Street  
Fulton, NY 13069

**Oswego County Fire Coordinator**  
Donald Forbes  
720 East Seneca St.  
Oswego, NY 13126

**Oswego County Youth Bureau, Parks and Recreation Division**  
70 Bunner St  
Oswego, NY 13126

**Oswego County Promotion and Tourism Department**  
Janet Clerkin, Coordinator  
46 East Bridge St  
Oswego, NY 13126

**Oswego County Department of Health**  
Jiancheng Huang, Director  
70 Bunner St  
Oswego, NY 13126

**Town of Worth**  
Judith A. Nichols, Town Supervisor  
P.O. Box 52  
Lorraine, NY 13659



**Town of Worth Highway Department**

Randy Filson  
Worth Town Barn,  
24600 Co Rte 189,  
Lorraine, NY 13659

**Town of Redfield**

Tanya Yerdon, Town Supervisor  
1 Balcom Dr.  
Redfield, NY 13437

**Town of Redfield Highway Department**

Paul Pratt, Superintendent  
1 Balcom Drive  
Redfield NY 13437

**South Jefferson Central School District**

Mary Beth Denny, Superintendent  
South Jefferson CSD  
P.O. Box 10  
Adams, NY 13605

**Sandy Creek Central School District**

Stewart R. Amell, Superintendent  
P.O. Box 248  
Sandy Creek, NY 13145

**ADJACENT MUNICIPALITIES AND SCHOOL DISTRICTS**

**Lewis County**

Linda D. Hoskins, County Clerk  
Liz Swearingin, County Executive  
Lewis County Court House  
Lowville, NY 13367

**Oneida County**

Anthony Picente, Jr., County Executive  
Sandra J. DePerno, County Clerk  
Oneida County Office Building  
800 Park Avenue  
Utica, New York 13501

**Town of Osceola**

Mike Findlay, Supervisor  
2008 Church St  
Camden, NY 133

**Town of Pinckney**

Sherry Harmych, Supervisor  
587 County Route 194

Copenhagen, NY 13626

**Town of Montague**

Kurt Riordan, Supervisor  
7270 McDonald Road  
Copenhagen, NY 13626

**Town of Harrisburg**

Stephen Bernat, Supervisor  
3620 O'Brien Road  
Lowville, NY 13367

**Town of Rodman**

Gary Stinson, Supervisor  
PO Box 523  
Rodman, NY 13682

**Town of Lorraine**

Vince Moore, Supervisor  
PO Box 56  
Lorraine, NY 13659

**Town of Boylston**

Ann Stacy, Supervisor  
580 County Route 13  
Lacona, NY 13083

**Town of Orwell**

William Potter, Supervisor  
1999 County Rte 2  
Orwell, NY 13426

**Copenhagen School District**

S. Connell, Superintendent  
3020 Mechanic Street  
PO Box 30  
Copenhagen, NY 13626

**Lowville Academy and Central School District**

Cheryl Steckly, Superintendent  
7668 State Street  
Lowville, NY 13667

**South Lewis School District**

Douglas Premo, Superintendent  
4264 Co Rd 43  
Turin, NY 13473

**Camden School District**

Mary Lynne Szczerba, Superintendent  
51 3rd St

Camden, NY 13316

**Altmar Parish Williamstown School District**

Anita Murphy  
639 County Route 22  
P.O. Box 97  
Parish, NY 13131

**PUBLIC INTEREST GROUPS**

**Nature Conservancy**

195 New Karner Rd, Suite 200  
Albany, NY 12205

**Northern New York Audubon Society**

Kendra Ormerod, President  
P.O. Box 741  
Tupper Lake, NY 12986

**NY Public Interest Research Group**

Albany - Legislative  
107 Washington Avenue  
Albany, NY 12210

**Winona Forest Recreation Association**

PO Box 26  
Pulaski, NY 13142

**Tug Hill Tomorrow Land Trust**

Linda Garrett, Executive Director  
PO Box 6063  
Watertown, NY 13601

**ADDITIONAL STAKEHOLDERS**

**Oswego County Airport**

Brandon Schwerdt, Manager  
40 Airport Drive  
Fulton, NY 13069

**Watertown International Airport**

22529 NY-12F  
Dexter, NY 13634

**Griffis International Airport**

Manager  
660 Hangar Road, Suite 223  
Rome, NY 13441

**Richland Airpark Inc.**

RR Box 367

Richland, NY 13144

**Duflo Airport**

RT 3 BOX 92

Lowville, NY 13367

**Tug Hill Farm Airport**

Lowville, NY 13367

**Guilfoyle Ambulance Services**

Jeff Call, Director of Administration

438 Newell St

Watertown, NY 13601

**Verizon (phone)**

5002 South Catherine

Plattsburgh, NY 12901

**Time Warner Cable (cable TV)**

277 Andrews Street

Massena, NY 13622

**AT&T Communications of New York, Inc.**

208 S. Akard Street

Dallas, TX 75202

**New York Power Authority (NYPA)**

Gil C. Quiniones, President and CEO

123 Main St.

Mail Stop 10 - H

White Plains, NY 10601-3170

**LOCAL DOCUMENT REPOSITORIES**

**Worth Town Hall**

24609 County Route 189

Rodman, NY 13682

**Redfield Town Hall**

4830 County Route 17

Redfield NY 13437

## **Exhibit B**

### Goals and Objectives of Stakeholder Involvement

<b>Stakeholder</b>	<b>Consultation Goal</b>	<b>Implementation Plan and Schedule</b>
<p>Host Municipalities:</p> <ul style="list-style-type: none"> <li>• Oswego County</li> <li>• Jefferson County</li> <li>• Town of Redfield</li> <li>• Town of Worth</li> </ul>	<ul style="list-style-type: none"> <li>- Community outreach</li> <li>- Solicitation of local feedback</li> <li>- Information dissemination on proposed Project; Article 10 generally; intervenor funding process; PSS/scoping process; Application; etc.</li> <li>- Collection of all information necessary for Article 10 Application, required studies, etc.</li> <li>- Identification of community concerns, local landmarks, land uses, and resources</li> <li>- Adjustment of study scope/methodology based on stakeholder input and concerns</li> <li>- Provide contact information for Project and opportunities for direct engagement with public</li> <li>- Review local laws to determine anticipated compliance or need for waivers</li> <li>- Consultation to inform the Applicant's estimate of incremental municipal, public authority, or utility operating and infrastructure costs that will be incurred for police, fire, emergency, water, sewer, solid waste disposal, highway maintenance and other municipal, public authority, or utility services during the</li> </ul>	<ul style="list-style-type: none"> <li>- Public Information Sessions and attendance at local meetings</li> <li>- Informational mailings</li> <li>- Launch and update Project Website</li> <li>- Establish a staffed local office, local contact phone number, and dedicated project email address to respond to inquiries and accept public comment</li> <li>- Initiate direct contact with local officials and boards regarding upcoming Article 10 milestones, submission of PSS (at least 2 weeks prior to filing), etc.</li> <li>- Consult with appropriate officials/departments regarding specific topics, such as road use, visual impact assessment, land use and comprehensive plans, and to exchange other information sought by the Applicant or by Stakeholder communities</li> <li>- Provide timely public/stakeholder notices and information on public comment periods, scheduled meetings/information sessions, and opportunities for participation</li> <li>- Obtain all relevant local laws, building codes, comprehensive plans, zoning maps, etc.</li> <li>- Discuss potential avoidance, minimization and mitigation measures</li> </ul>

	<p>construction and operation phases of the facility</p> <ul style="list-style-type: none"> <li>- Develop avoidance, minimization and mitigation plans to address potential Project impacts</li> </ul>	<p>to address identified impacts</p>
<p>Host School Districts:</p> <ul style="list-style-type: none"> <li>• Sandy Creek Central School District</li> <li>• South Jefferson Central School District</li> </ul>	<ul style="list-style-type: none"> <li>- Solicitation of local feedback</li> <li>- Information dissemination on proposed Project</li> <li>- Discuss impacts to school bus routes, district operating budget, and school operations, if any</li> <li>- Adjustment of study scope/methodology based on stakeholder input and concerns</li> <li>- Provide contact information for Project and opportunities for direct engagement with public</li> <li>- Develop avoidance, minimization and mitigation plans to address potential Project impacts</li> </ul>	<ul style="list-style-type: none"> <li>- Provide timely stakeholder notices and information</li> <li>- Initiate direct contact with local officials and boards regarding upcoming Article 10 milestones, submission of PSS (at least 2 weeks prior to filing), etc.</li> <li>- Consult with District to inform the Applicant's estimate of incremental school district operating and infrastructure costs due to the construction and operation of the facility</li> <li>- Work with school officials to develop transportation plans to minimize or avoid delays/traffic problems associated with construction of the Project</li> <li>- Schedule meetings and information sessions</li> <li>- Gather local feedback</li> <li>- Discuss potential avoidance, minimization and mitigation measures to address identified impacts</li> </ul>
<p>Host Community Highway Departments:</p> <ul style="list-style-type: none"> <li>• New York State Department of Transportation</li> <li>• Oswego County Highway Department</li> <li>• Jefferson County Highway Department</li> <li>• Town of Worth Highway Department</li> </ul>	<ul style="list-style-type: none"> <li>- Solicitation of local feedback</li> <li>- Information dissemination on proposed Project</li> <li>- Gather information on transportation routes, condition and capacity of local roads</li> <li>- Discuss impacts to transportation and local infrastructure during and after construction;</li> </ul>	<ul style="list-style-type: none"> <li>- Obtain and review Highway Department requirements for temporary radius improvements, transportation routes, and use of right-of-way</li> <li>- Initiate direct contact with local officials and boards regarding upcoming Article 10 milestones, submission of PSS (at least 2 weeks prior to filing), etc.</li> </ul>

<ul style="list-style-type: none"> <li>• Town of Redfield Highway Department</li> </ul>	<p>transportation routes, improvements and use of right-of-way; and contingency plans in the event of an emergency</p> <ul style="list-style-type: none"> <li>- Develop avoidance, minimization and mitigation plans to address potential Project impacts</li> </ul>	<ul style="list-style-type: none"> <li>- Meet with highway officials to discuss concerns, potential impacts, avoidance/minimization strategies and potential mitigation</li> <li>- Work with local officials to develop transportation plans to minimize or avoid delays/traffic problems associated with construction of the Project</li> <li>- Provide timely stakeholder notices and information</li> <li>- Discuss potential avoidance, minimization and mitigation measures to address identified impacts</li> </ul>
<p>Adjacent Municipalities:</p> <ul style="list-style-type: none"> <li>• Lewis County</li> <li>• Oneida County</li> <li>• Town of Osceola</li> <li>• Town of Montague</li> <li>• Town of Pinckney</li> <li>• Town of Harrisburg</li> <li>• Town of Rodman</li> <li>• Town of Lorraine</li> <li>• Town of Boylston</li> <li>• Town of Orwell</li> </ul>	<ul style="list-style-type: none"> <li>- Solicitation of local feedback</li> <li>- Information dissemination on proposed Project</li> <li>- Identification of community concerns, local landmarks, land uses, and resources</li> <li>- Adjustment of study scope/methodology based on stakeholder input and concerns</li> <li>- Provide contact information for Project and opportunities for direct engagement with public</li> <li>- Develop avoidance, minimization and mitigation plans to address potential Project impacts</li> </ul>	<ul style="list-style-type: none"> <li>- Provide timely stakeholder notices and information</li> <li>- Initiate direct contact with local officials and boards regarding upcoming Article 10 milestones, submission of PSS (at least 2 weeks prior to filing), etc.</li> <li>- Consult with communities to ascertain local concerns</li> <li>- Work with school officials to develop transportation plans to minimize or avoid delays/traffic problems associated with construction of the Project</li> <li>- Schedule meetings and information sessions</li> <li>- Gather local feedback</li> <li>- Discuss potential avoidance, minimization and mitigation measures to address identified impacts</li> </ul>
<p>Adjacent School Districts:</p> <ul style="list-style-type: none"> <li>• Altmar Parish Williamstown School District</li> </ul>	<ul style="list-style-type: none"> <li>- Solicitation of local feedback</li> <li>- Information dissemination on proposed Project</li> </ul>	<ul style="list-style-type: none"> <li>- Provide timely stakeholder notices and information</li> <li>- Initiate direct contact with local officials and boards</li> </ul>



<ul style="list-style-type: none"> <li>• Copenhagen School District</li> <li>• Lowville School District</li> <li>• South Lewis School District</li> <li>• Camden School District</li> </ul>	<ul style="list-style-type: none"> <li>- Develop avoidance, minimization and mitigation plans to address potential Project impacts</li> </ul>	<p>regarding upcoming Article 10 milestones, submission of PSS (at least 2 weeks prior to filing), etc.</p> <ul style="list-style-type: none"> <li>- Consult with District to ascertain local concerns</li> <li>- Work with school officials to develop transportation plans to minimize or avoid delays/traffic problems associated with construction of the Project</li> <li>- Schedule meetings and information sessions</li> <li>- Gather local feedback</li> </ul>
<p>Emergency Response Organizations:</p> <ul style="list-style-type: none"> <li>• Local Fire and Rescue Departments and Companies</li> <li>• Oswego County Emergency Management Office</li> <li>• Oswego County Fire Coordinator</li> <li>• Jefferson County Emergency Services</li> <li>• NYS Division of Homeland Security and Emergency Services</li> </ul>	<ul style="list-style-type: none"> <li>- Inform emergency responders about proposal, construction process, operation, potential impacts on transportation routes, and contingency plans</li> <li>- Solicitation of local feedback</li> <li>- Information dissemination on proposed Project</li> <li>- Develop avoidance, minimization and mitigation plans to address potential Project impacts</li> </ul>	<ul style="list-style-type: none"> <li>- Provide timely stakeholder notices and information</li> <li>- Initiate direct contact with local agencies regarding upcoming Article 10 milestones, submission of PSS (at least 2 weeks prior to filing), etc.</li> <li>- Consult with departments to ascertain local concerns</li> <li>- Work with emergency responders to develop transportation plans and contingency plans to minimize or avoid delays/traffic problems associated with construction of the Project</li> <li>- Schedule meetings and information sessions</li> <li>- Gather local feedback</li> <li>- Discuss potential avoidance, minimization and mitigation measures to address identified impacts</li> </ul>
<p>Aviation and Defense:</p> <ul style="list-style-type: none"> <li>• Federal Aviation Administration (FAA)</li> <li>• US Department of Defense (DoD)</li> </ul>	<ul style="list-style-type: none"> <li>- Ascertain potential impacts of the project on radar, defense systems, flight paths, and facility operations</li> </ul>	<ul style="list-style-type: none"> <li>- Request an informal Department of Defense review of the proposed construction or alteration, in accordance with 32 Code of Federal</li> </ul>

<ul style="list-style-type: none"> <li>• Local Airports/Heliports</li> </ul>	<ul style="list-style-type: none"> <li>- Adjustment of study scope/methodology based on stakeholder input and concerns</li> <li>- Solicitation of stakeholder feedback</li> <li>- Information dissemination on proposed Project</li> <li>- Develop avoidance, minimization and mitigation plans to address potential Project impacts</li> </ul>	<p>Regulations, Section 211.7; or a formal Department of Defense review of the proposed construction or alteration in accordance with 32 Code of Federal Regulations, Section 211.6</p> <ul style="list-style-type: none"> <li>- FAA consultations, as required by law, on potential impacts to airport operations and radar, as well as potential emergency lighting requirements</li> <li>- Consultations with stakeholders to identify any potential impacts to radar, flight paths, national defense, or other concerns</li> <li>- Discuss potential avoidance, minimization and mitigation measures to address identified impacts</li> <li>- Identify the necessity of consultations with the operators of airports or heliports</li> <li>- Include outreach to inform such operators of the proposed facility and its location prior to the submission of the preliminary scoping statement</li> <li>- Pursue consultations with operators of airports and heliports that are non-military facilities, including providing a detailed map and description of such construction or alteration to such operators, and a request for review of and comment on such construction or alteration by such operators</li> </ul>
--	---	---

<p>Utilities/Communications:</p> <ul style="list-style-type: none"> <li>• National Telecommunications and Information Administration</li> <li>• National Grid</li> <li>• Verizon</li> <li>• AT&amp;T</li> <li>• Development Authority of the North Country</li> <li>• NYPA</li> </ul>	<ul style="list-style-type: none"> <li>- Ascertain potential impacts of the project on communications infrastructure, energy transmission and interconnection, and the electric grid</li> <li>- Solicitation of stakeholder feedback</li> <li>- Information dissemination on proposed Project</li> <li>- Develop avoidance, minimization and mitigation plans to address potential Project impacts</li> </ul>	<ul style="list-style-type: none"> <li>- Consultations with stakeholders to identify any potential impacts to utility infrastructure, communications, grid reliability/security, etc.</li> <li>- Discuss potential avoidance, minimization and mitigation measures to address identified impacts</li> <li>- Provide timely stakeholder notices and information</li> <li>- Consult with the Development Authority of the North Country with regard to broadband initiatives, potential impacts, and possible opportunities for coordination and co-location of facilities</li> </ul>
<p>Environmental Agencies and Public Interest Groups:</p> <ul style="list-style-type: none"> <li>• NYS Department of Environmental Conservation (DEC)</li> <li>• US Fish and Wildlife Service (FWS)</li> <li>• US Army Corps of Engineers</li> <li>• The Nature Conservancy</li> <li>• Northern New York Audubon Society</li> <li>• NYS Department of Public Service</li> <li>• Tug Hull Tomorrow Land Trust</li> <li>• National Park Service Wild, Scenic and Recreational Rivers Program</li> <li>• US Department of Agriculture, Natural Resources Conservation Service</li> </ul>	<ul style="list-style-type: none"> <li>- Ascertain potential impacts of the project on environmental resources, including avian and bat species, plants, wetlands, protected species and habitat, land use, public health and safety, emissions, noise, geology/soils, water resources, agricultural lands, and other matters of concern to stakeholders</li> <li>- Collection of all information necessary for Article 10 Application, required studies, etc.</li> <li>- Identification of agency concerns, state parks and scenic resources, wildlife management areas, conservation easements, protected lands and other resources</li> </ul>	<ul style="list-style-type: none"> <li>- Review bird/bat studies with DEC and FWS to determine adequacy of scope and methodology, and compliance of proposed plan with established regulations, guidance and study protocols</li> <li>- Confer with DEC, DPS and Army Corps regarding wetlands delineations, stream crossings, and other relevant issues</li> <li>- Confer with DEC and FWS regarding potential concerns associated with endangered species, the need for incidental take permits, and the Migratory Bird Treaty Act</li> <li>- Confer with DEC and DPS regarding Water Quality Certification requirements and process</li> </ul>

	<ul style="list-style-type: none"> <li>- Adjustment of study scope/methodology based on stakeholder input and concerns</li> <li>- Consultation with agencies regarding regulatory compliance, permit requirements, etc.</li> <li>- Solicitation of stakeholder feedback</li> <li>- Information dissemination on proposed Project</li> <li>- Develop avoidance, minimization and mitigation plans to address potential Project impacts</li> </ul>	<ul style="list-style-type: none"> <li>- Consultation to develop an acceptable input data set, including modeling for the Applicant's proposed facility and inputs for the emissions analysis</li> <li>- Consultation with the state agencies and authorities whose requirements are the subject of the State Laws and Regulations exhibit to determine whether the Applicant has correctly identified all such requirements, potentially required permits, etc.</li> <li>- Discuss potential avoidance, minimization and mitigation measures to address identified impacts</li> <li>- Provide timely stakeholder notices and information</li> <li>- Consult with holders of conservation easements regarding impacts</li> </ul>
<p>Agricultural Agencies and Stakeholders:</p> <ul style="list-style-type: none"> <li>• NYS Department of Agriculture and Markets (Ag &amp; Mkts)</li> <li>• Cornell Cooperative Extension</li> <li>• County Soil and Water Conservation Districts</li> <li>• US Department of Agriculture, Natural Resources Conservation Service</li> </ul>	<ul style="list-style-type: none"> <li>- Ascertain potential impacts of the project on agricultural resources</li> <li>- Consultation with agencies regarding regulatory compliance and agency guidance</li> <li>- Develop avoidance, minimization and mitigation plans to address potential Project impacts</li> <li>- Adjustment of study scope/methodology based on stakeholder input and concerns</li> </ul>	<ul style="list-style-type: none"> <li>- Solicit feedback from stakeholders on any potential agricultural concerns unique to Project Area</li> <li>- Confer with Ag &amp; Mkts regarding compliance with agency guidance and policies</li> <li>- Request information or guidance from stakeholders on potential agricultural impacts, as well as potential avoidance, minimization and mitigation measures to address those impacts</li> <li>- Consultation with the state agencies and authorities whose requirements are</li> </ul>

		<p>the subject of the State Laws and Regulations exhibit to determine whether the Applicant has correctly identified all such requirements</p> <ul style="list-style-type: none"> <li>- Provide timely stakeholder notices and information</li> </ul>
<p>Historical/Cultural/Socioeconomic Groups:</p> <ul style="list-style-type: none"> <li>• NYS Office of Parks, Recreation and Historic Preservation</li> <li>• Empire State Development Corporation</li> <li>• County Planning Offices</li> <li>• Oswego County Youth Bureau, Parks and Recreation Division</li> <li>• Oswego County Promotion and Tourism Department</li> <li>• NYS Tug Hill Commission</li> <li>• Development Authority of the North Country</li> <li>• Forest Preserve and Parks user groups</li> <li>• National Park Service Wild, Scenic and Recreational Rivers Program</li> <li>• Winona Forest Recreation Association</li> </ul>	<ul style="list-style-type: none"> <li>- Ascertain potential impacts of the Project on historical and cultural resources</li> <li>- Ascertain potential socioeconomic effects of Project</li> <li>- Consultation with agencies regarding regulatory compliance and agency guidance, as well as regional and local long-term planning efforts and development goals, Comprehensive Plans, etc.</li> <li>- Identify resources and landmarks of local concern</li> <li>- Develop avoidance, minimization and mitigation plans to address potential Project impacts</li> <li>- Adjustment of study scope/methodology based on stakeholder input and concerns</li> </ul>	<ul style="list-style-type: none"> <li>- Consultation in accordance with Section 14.09 of the New York State Parks, Recreation, and Historic Preservation Law and/or Section 106 of the Historic Preservation Act</li> <li>- Consultation with OPRHP and DPS regarding cultural resources studies and to determine the need for and scope of work for any required Phase II cultural resources study</li> <li>- Consultation to establish representative viewpoints for the photographic simulations of the facility and interconnections</li> <li>- Gather information on resources and landmarks of local concern for cultural impact assessment</li> <li>- Develop information on potential socioeconomic effects of Project, including job creation, tax revenues, and incidental effects on local business and industry</li> <li>- Schedule meetings and information sessions</li> <li>- Gather local feedback</li> <li>- Consultation with the state agencies and authorities whose requirements are the subject of the State Laws and Regulations exhibit to determine whether the</li> </ul>

		<p>Applicant has correctly identified all such requirements</p> <ul style="list-style-type: none"> <li>- Discuss potential avoidance, minimization and mitigation measures to address identified impacts</li> <li>- Provide timely stakeholder notices and information</li> <li>- Consult with DEC regarding Environmental Justice considerations</li> <li>- Consult with local and regional planning agencies and municipalities regarding long-term land use planning and development, Comprehensive Plans, etc.</li> </ul>
<p>Energy Agencies and Groups:</p> <ul style="list-style-type: none"> <li>• NYS Department of Public Service (DPS)</li> <li>• NY Independent Systems Operator</li> <li>• New York State Research and Development Authority</li> </ul>	<ul style="list-style-type: none"> <li>- Ascertain potential impacts of the project on energy transmission and interconnection, and the electric grid</li> <li>- Discuss the Project’s compliance with state energy planning objectives</li> <li>- Solicitation of stakeholder feedback</li> <li>- Information dissemination on proposed Project</li> <li>- Develop avoidance, minimization and mitigation plans to address potential Project impacts</li> <li>- Achieve compliance with Article 10 regulatory requirements, an adequate PIP and PSS, a complete Application, etc.</li> <li>- Adjustment of study scope/methodology based on stakeholder input and concerns</li> </ul>	<ul style="list-style-type: none"> <li>- Consultation to develop an acceptable input data set, including modeling for the Applicant’s proposed facility and inputs for required emissions and electric system effects analysis</li> <li>- Work with NYISO to coordinate System Reliability Impact Study (SRIS)</li> <li>- Confer with stakeholders to ascertain the ways in which the Project will advance state energy planning objectives and be consistent with the State Energy Plan and state policy</li> <li>- Consultation with the state agencies and authorities whose requirements are the subject of the State Laws and Regulations exhibit to determine whether the Applicant has correctly</li> </ul>

		<p>identified all such requirements</p> <ul style="list-style-type: none"> <li>- Consultation to identify applicable requirements to be used to demonstrate the degree of compliance with all relevant applicable reliability criteria of the Northeast Power Coordinating Council Inc., New York State Reliability Council, and the local interconnecting transmission utility, including any criteria regarding blackstart and fuel switching capabilities</li> <li>- Discuss potential avoidance, minimization and mitigation measures to address identified impacts</li> <li>- Provide timely stakeholder notices and information</li> </ul>
<p>Other Affected Federal and State Agencies:</p> <ul style="list-style-type: none"> <li>• NYS Department of Health</li> <li>• NYS Attorney General</li> <li>• NYS Department of State</li> </ul>	<ul style="list-style-type: none"> <li>- Contact Stakeholders</li> <li>- Disseminate Information regarding Project, Article 10, and intervenor funding</li> <li>- Provide contact information</li> <li>- Identify any specific issues or concerns</li> <li>- Schedule follow up meeting(s) and consultation(s), as appropriate</li> <li>- Adjustment of study scope/methodology based on stakeholder concerns</li> </ul>	<ul style="list-style-type: none"> <li>- Consultation with the agencies and authorities whose requirements are the subject of the Laws and Regulations exhibits to determine whether the Applicant has correctly identified all such requirements</li> <li>- Provide timely stakeholder notices and information</li> <li>- Ensure scope and methodology of public health and safety studies are adequate to address stakeholder concerns</li> </ul>
<p>Elected Representatives:</p> <ul style="list-style-type: none"> <li>• NYS Governor’s Office</li> <li>• State Senators Patty Ritchie, 48<sup>th</sup> Senate District, and Joseph</li> </ul>	<ul style="list-style-type: none"> <li>- Contact representatives</li> <li>- Disseminate Information regarding Project and provide contact info</li> <li>- Identify any specific issues or concerns</li> </ul>	<ul style="list-style-type: none"> <li>- Provide timely stakeholder notices and information</li> <li>- Direct contact through telephone calls, mailings, meetings and discussions, as appropriate</li> </ul>

<p>Griffo, 47<sup>th</sup> Senate District</p> <ul style="list-style-type: none"> <li>• State Assemblymen Ken Blankenbush and William Barclay, Assembly Districts 117 and 120</li> <li>• US Senator Charles Schumer</li> <li>• US Senator Kirsten Gillibrand</li> <li>• US Representatives Elise Stefanik and Claudia Tenney, 21<sup>st</sup> and 22<sup>nd</sup> Congressional Districts</li> </ul>	<ul style="list-style-type: none"> <li>- Schedule follow up meeting(s) and consultation(s), as appropriate</li> </ul>	
<p>Other Stakeholders/Agencies:</p> <ul style="list-style-type: none"> <li>• NYS Public Interest Research Group</li> </ul>	<ul style="list-style-type: none"> <li>- Contact Stakeholders</li> <li>- Disseminate Information regarding Project, Article 10, and intervenor funding</li> <li>- Provide contact information</li> <li>- Identify any specific issues or concerns</li> <li>- Schedule follow up meeting(s) and consultation(s), as appropriate</li> </ul>	<ul style="list-style-type: none"> <li>- Provide timely stakeholder notices and information</li> <li>- Direct contact through telephone calls, mailings, meetings and discussions, as appropriate</li> </ul>



