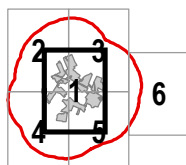


Mohawk Solar
Towns of Canajoharie and Minden,
Montgomery County, New York

Article 10 Application

Figure 15-1: Public Health and Safety

Notes: 1. Basemap: ESRI Streetmap North America 2008. 2. This map was generated in ArcMap by Environmental Design and Research on May 24, 2019. 3. This is a color graphic. Reproduction in grayscale may misrepresent the data. 4. The stipulations require hospitals to be shown on this map, but none are present in the study area so they are not shown.



Page 1 of 6

Project Facility Components

- Facility Site
- 2 Mile Facility Site Study Area

FEMA Flood Zones

- 500 Year Flood Zone
- 100 Year Flood Zone

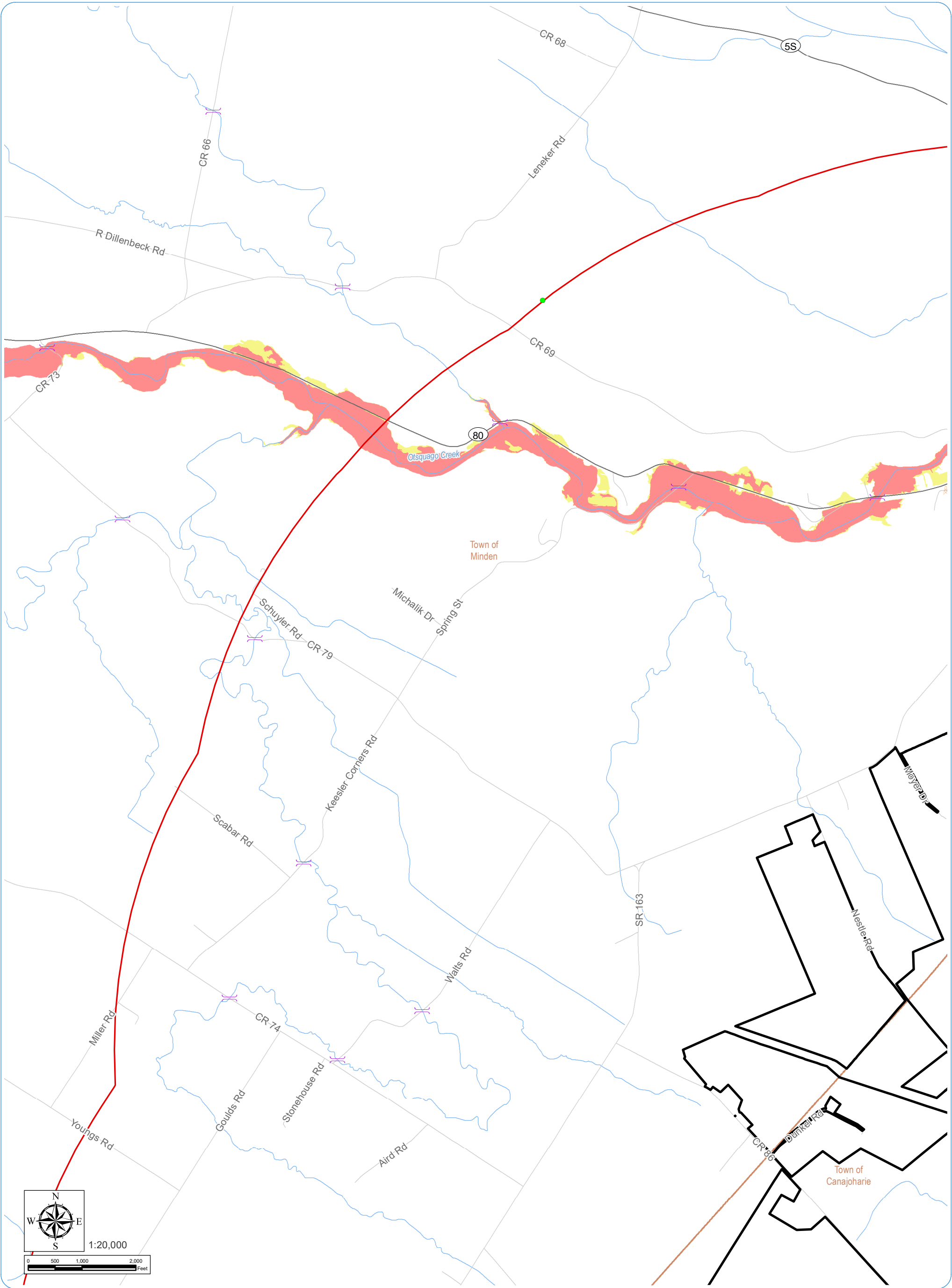
Public Entities

- Land Mobile and Emergency Services Site
- Public Water Supply
- Police Station
- Fire and EMS station
- Bridge
- EPA Regulated Facility
- NYSDEC Remediatiton Site

Civil Boundaries

- Town Boundary
- City/Village Boundary
- County Boundary



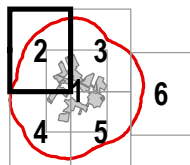


Mohawk Solar
Towns of Canajoharie and Minden,
Montgomery County, New York

Article 10 Application

Figure 15-1: Public Health and Safety

Notes: 1. Basemap: ESRI Streetmap North America 2008. 2. This map was generated in ArcMap by Environmental Design and Research on May 24, 2019. 3. This is a color graphic. Reproduction in grayscale may misrepresent the data. 4. The stipulations require hospitals to be shown on this map, but none are present in the study area so they are not shown.



Page 2 of 6

Project Facility Components

- Facility Site
- 2 Mile Facility Site Study Area

FEMA Flood Zones

- 500 Year Flood Zone
- 100 Year Flood Zone

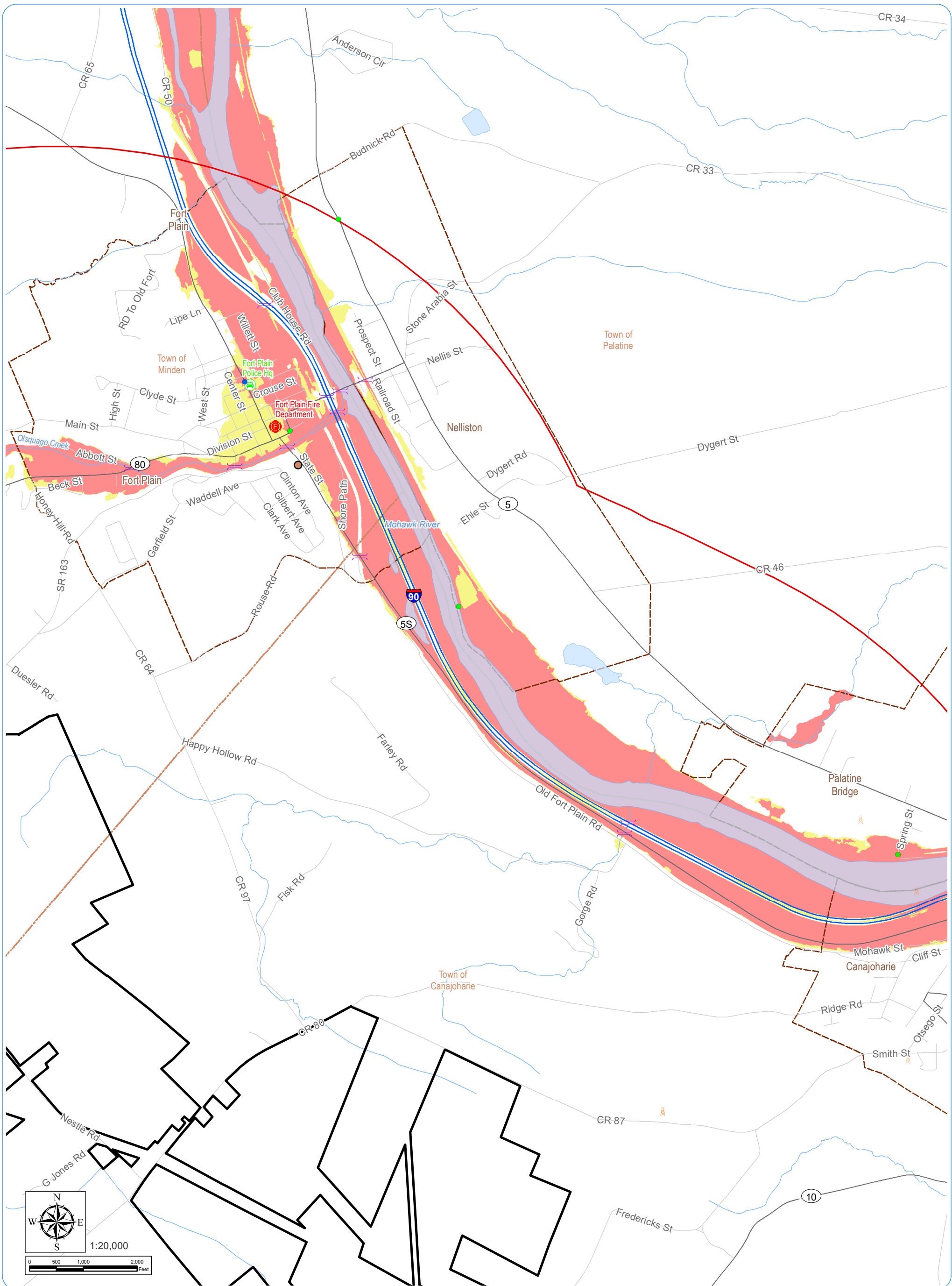
Public Entities

- Land Mobile and Emergency Services Site
- Public Water Supply
- Police Station
- Fire and EMS station
- Bridge
- EPA Regulated Facility
- NYSDEC Remediatiton Site

Civil Boundaries

- Town Boundary
- County Boundary



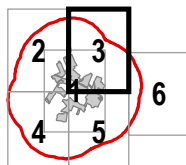


Mohawk Solar
Towns of Canajoharie and Minden,
Montgomery County, New York

Article 10 Application

Figure 15-1: Public Health and Safety

Notes: 1. Basemap: ESRI Streetmap North America 2008. 2. This map was generated in ArcMap by Environmental Design and Research on May 24, 2019. 3. This is a color graphic. Reproduction in grayscale may misrepresent the data. 4. The stipulations require hospitals to be shown on this map, but none are present in the study area so they are not shown.



Page 3 of 6

Project Facility Components

- Facility Site
- 2 Mile Facility Site Study Area

FEMA Flood Zones

- 500 Year Flood Zone
- 100 Year Flood Zone

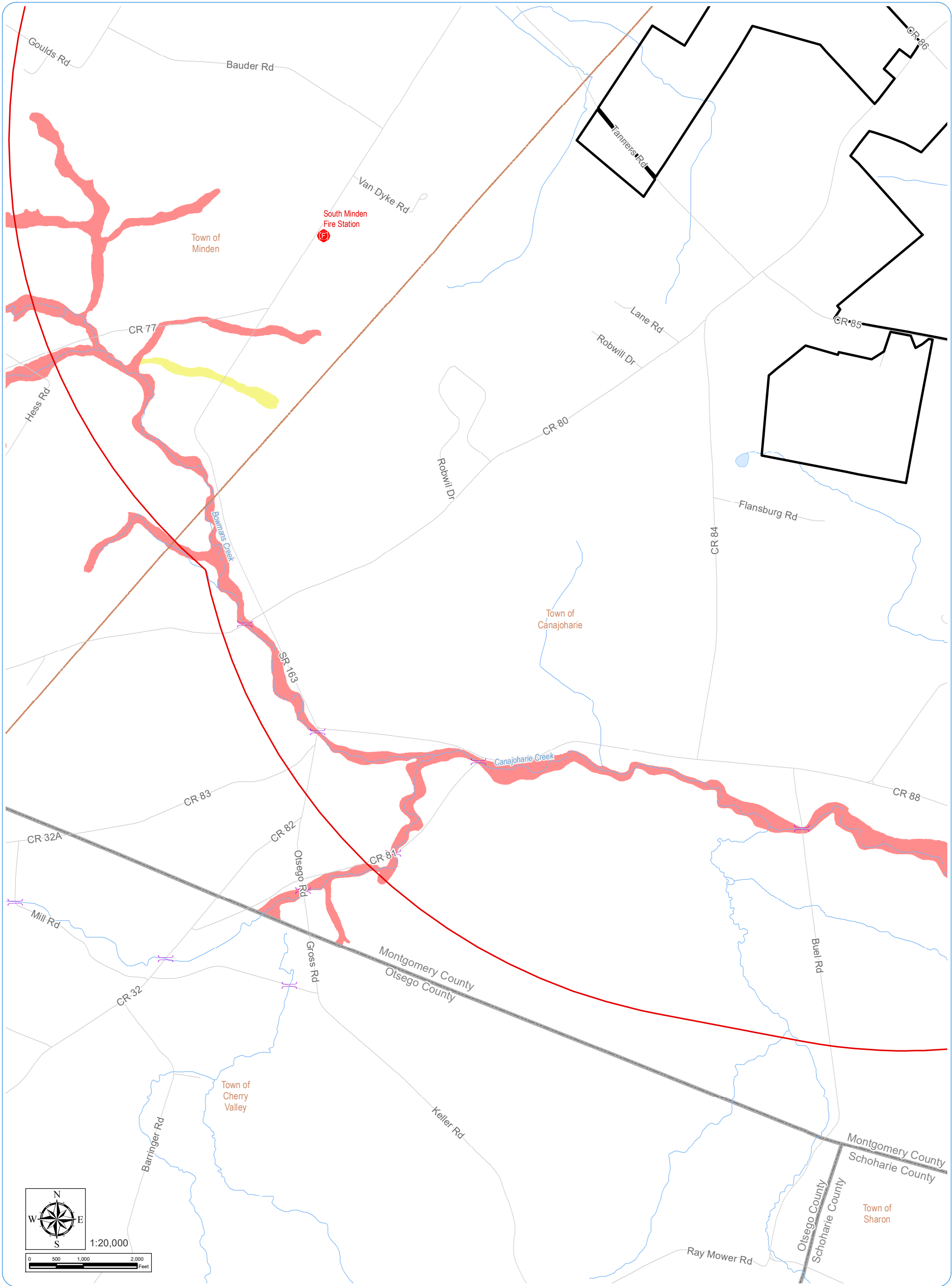
Public Entities

- Land Mobile and Emergency Services Site
- Public Water Supply
- Police Station
- Fire and EMS station
- Bridge
- EPA Regulated Facility
- NYSDEC Remediation Site

Civil Boundaries

- Town Boundary
- City/Village Boundary
- County Boundary



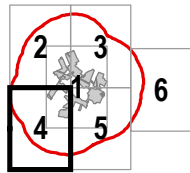


Mohawk Solar
Towns of Canajoharie and Minden,
Montgomery County, New York

Article 10 Application

Figure 15-1: Public Health and Safety

Notes: 1. Basemap: ESRI Streetmap North America 2008. 2. This map was generated in ArcMap by Environmental Design and Research on May 24, 2019. 3. This is a color graphic. Reproduction in grayscale may misrepresent the data. 4. The stipulations require hospitals to be shown on this map, but none are present in the study area so they are not shown.



Page 4 of 6

Project Facility Components

- Facility Site
- 2 Mile Facility Site Study Area

FEMA Flood Zones

- 500 Year Flood Zone
- 100 Year Flood Zone

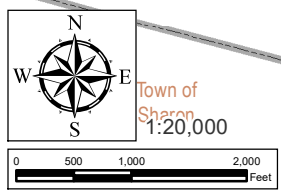
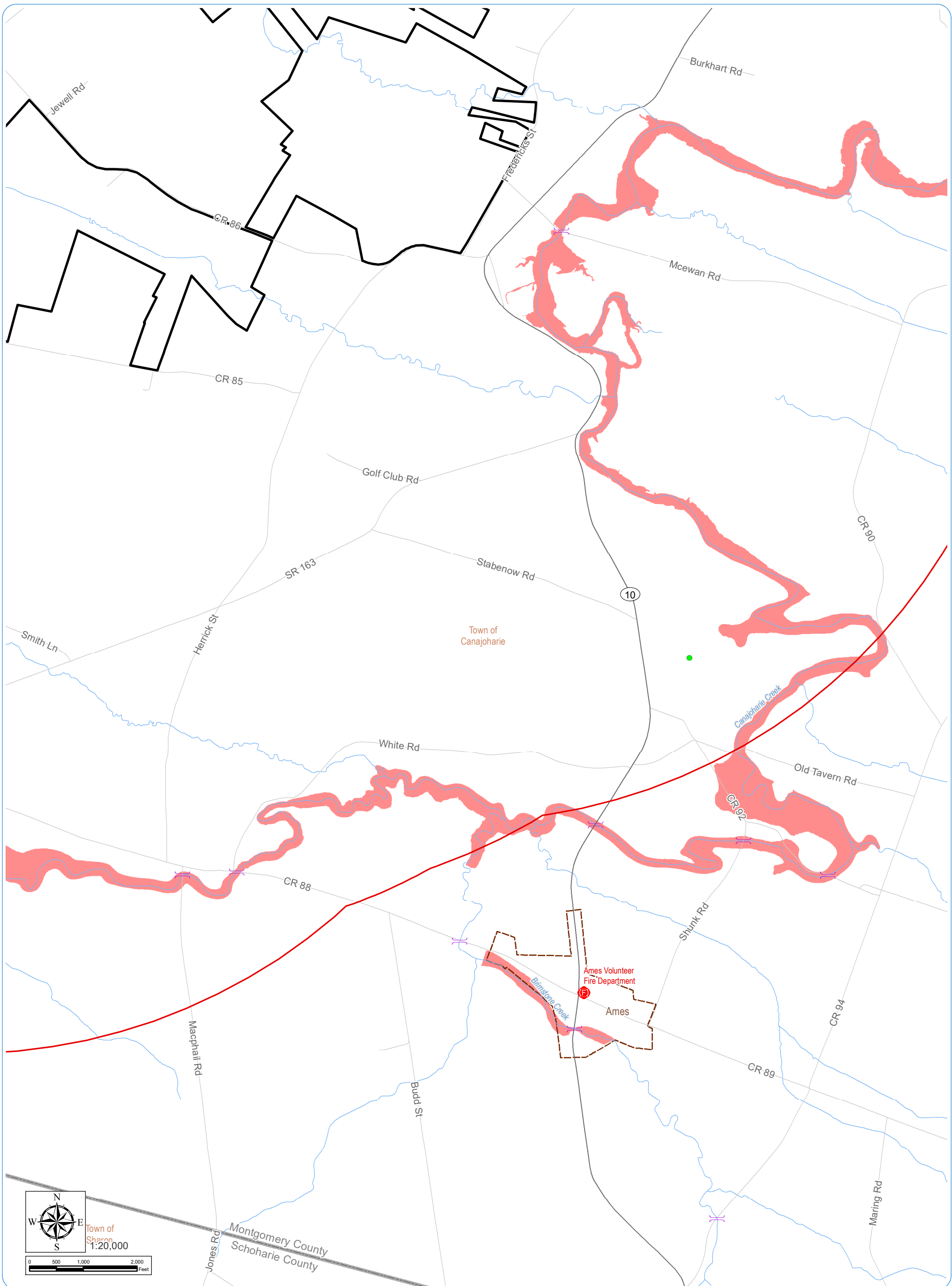
Public Entities

- Land Mobile and Emergency Services Site
- Public Water Supply
- Police Station
- Fire and EMS station
- Bridge
- EPA Regulated Facility
- NYSDEC Remediatiton Site

Civil Boundaries

- Town Boundary
- County Boundary



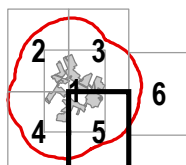


Mohawk Solar
Towns of Canajoharie and Minden,
Montgomery County, New York

Article 10 Application

Figure 15-1: Public Health and Safety

Notes: 1. Basemap: ESRI Streetmap North America 2008. 2. This map was generated in ArcMap by Environmental Design and Research on May 24, 2019. 3. This is a color graphic. Reproduction in grayscale may misrepresent the data. 4. The stipulations require hospitals to be shown on this map, but none are present in the study area so they are not shown.



Page 5 of 6

Project Facility Components

- Facility Site
- 2 Mile Facility Site Study Area

FEMA Flood Zones

- 500 Year Flood Zone
- 100 Year Flood Zone

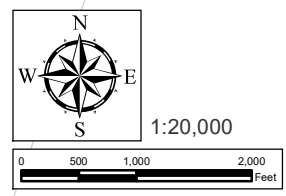
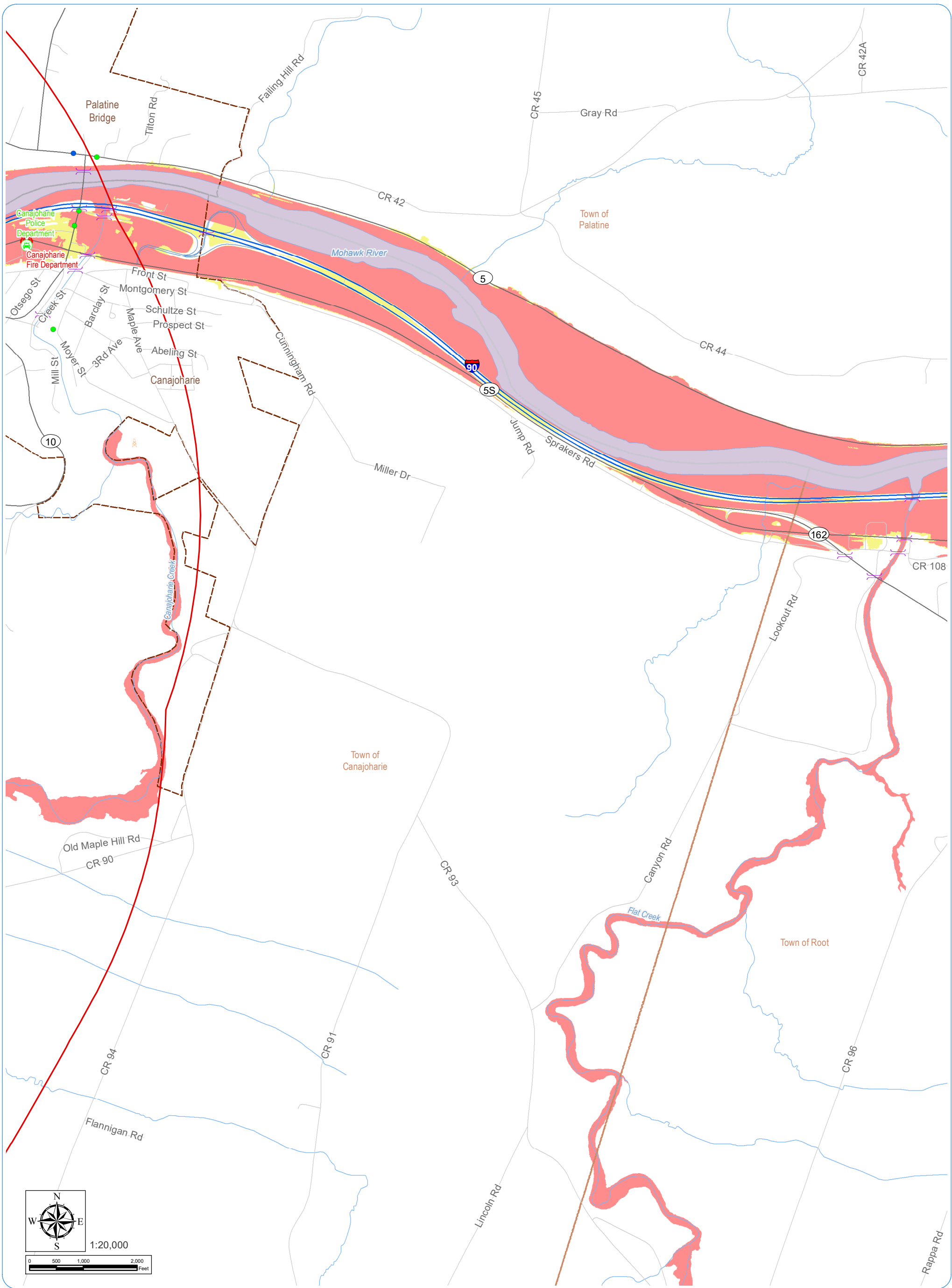
Public Entities

- Land Mobile and Emergency Services Site
- Public Water Supply
- Police Station
- Fire and EMS station
- Bridge
- EPA Regulated Facility
- NYSDEC Remediation Site

Civil Boundaries

- Town Boundary
- City/Village Boundary
- County Boundary



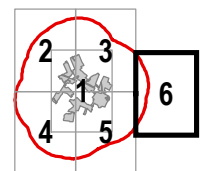


Mohawk Solar
Towns of Canajoharie and Minden,
Montgomery County, New York

Article 10 Application

Figure 15-1: Public Health and Safety

Notes: 1. Basemap: ESRI Streetmap North America 2008. 2. This map was generated in ArcMap by Environmental Design and Research on May 24, 2019. 3. This is a color graphic. Reproduction in grayscale may misrepresent the data. 4. The stipulations require hospitals to be shown on this map, but none are present in the study area so they are not shown.



Page 6 of 6

Project Facility Components

- Facility Site
- 2 Mile Facility Site Study Area

FEMA Flood Zones

- 500 Year Flood Zone
- 100 Year Flood Zone

Public Entities

- Land Mobile and Emergency Services Site
- Public Water Supply
- Police Station
- Fire and EMS station
- Bridge
- EPA Regulated Facility
- NYSDEC Remediation Site

Civil Boundaries

- Town Boundary
- City/Village Boundary
- County Boundary

